

LOC/DME I-PKU 111.75 Chan 54 (Y)	APP CRS 275°	Rwy Idg TDZE Apt Elev 9000 998 1026
--	------------------------	---

ILS or LOC RWY 28

HARTSFIELD-JACKSON ATLANTA INTL (ATL)

Simultaneous approach authorized with Rwy 26R or 26L or 27R, or Rwy 26R and 27R. DME or Radar Required.

ALSF-2

MISSED APPROACH: Climb to 1400 then climbing left turn to 3000 on ATL VORTAC R-185 to SCARR INT/ ATL 15 DME and hold.

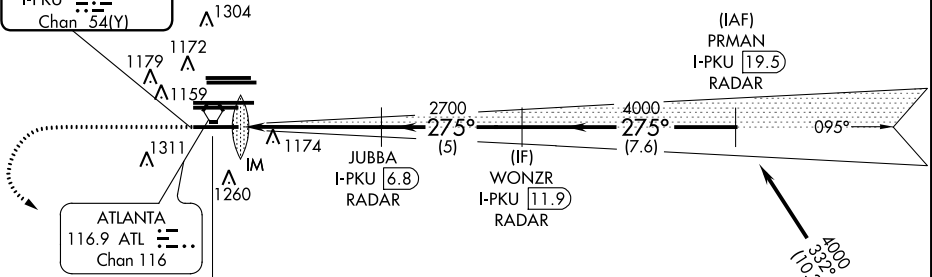
D-ATIS ARR 119.65	ATLANTA APP CON 127.9 379.9	ATLANTA TOWER 8L-26R 8R-26L 9L-27R 9R-27L 10-28 RWYS 119.1 125.325 123.85 119.3 119.5 254.4	ALL RWYS 121.9	GND CON 121.75	ALL RWYS 121.65 254.4
-----------------------------	-----------------------------------	---	----------------------	-------------------	-----------------------------

△2049
△2049

CLNC DEL 118.1	CPDLC
-----------------------------	-------

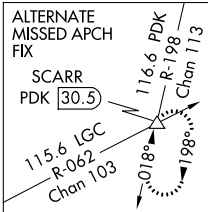
GPS or RADAR REQUIRED

LOCALIZER 111.75
I-PKU
Chan 54(Y)

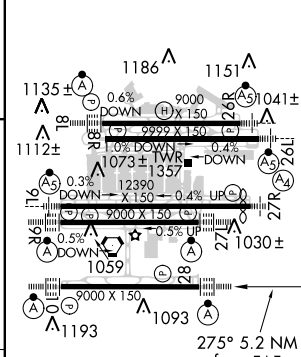
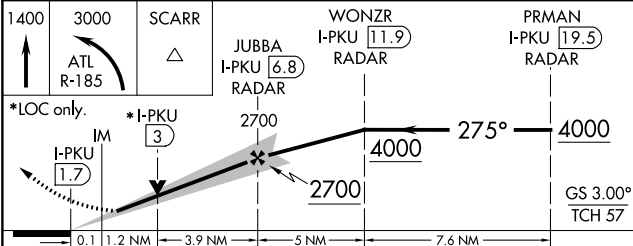


SE-4, 31 JAN 2019 to 28 FEB 2019

SE-4, 31 JAN 2019 to 28 FEB 2019



ELEV 1026	D TDZE 998
-----------	-------------------



CATEGORY	A	B	C	D
S-ILS 28	1198/18		200 (200-1/2)	
S-LOC 28	1480/24	482 (500-1/2)	1480/50	482 (500-1)

HIRL all Rwy's
TDZ/CL Rwy's 8L, 9R,
10, 26R, 27L and 28

FAF to MAP 5.2 NM

Knots	60	90	120	150	180
Min:Sec	5:12	3:28	2:36	2:05	1:44