

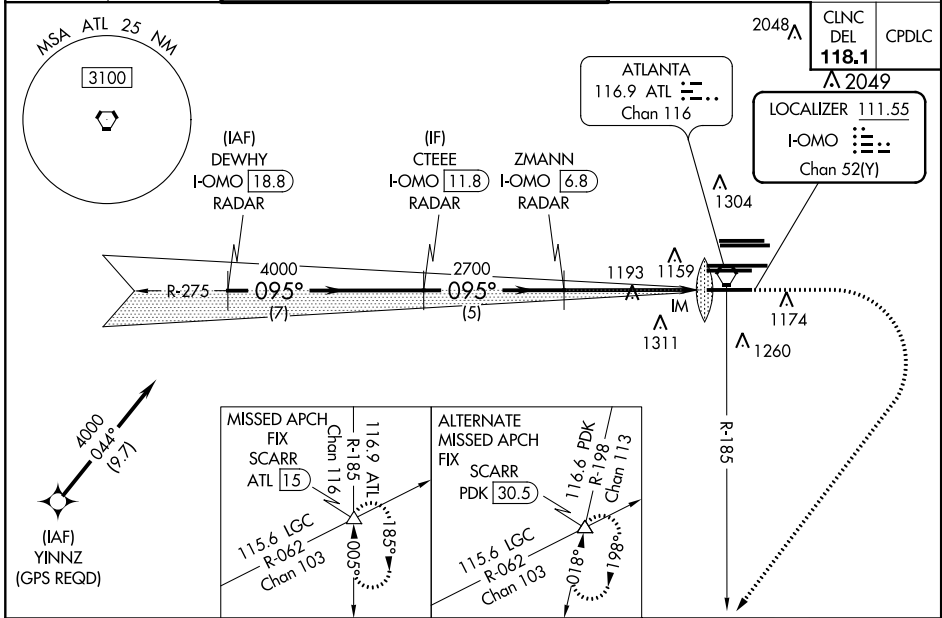
LOC/DME I-OMO 111.55	APP CRS 095°	Rwy Ldg 9000
Chan 52 (Y)		TDZE 1000
		Apt Elev 1026

ILS RWY 10 (CAT II & III)

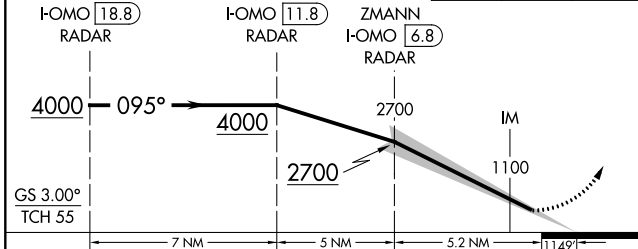
HARTSFIELD-JACKSON ATLANTA INTL (ATL)

<p>Simultaneous approach authorized with Rwy 9L or 8R or 8L, or Rwy 9L and 8L. DME or Radar required. Localizer not suitable for electronic rollout guidance.</p>	ALSF-2 A	MISSED APPROACH: Climb to 1400 then climbing right turn to 3000 at ATL VORTAC R-185 to SCARR INT/ATL 15 DME and hold.

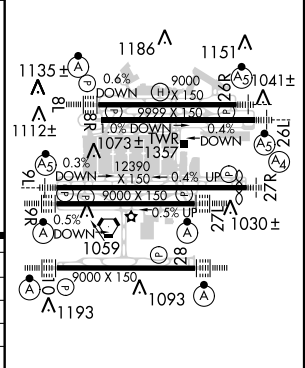
D-ATIS ARR 119.65	ATLANTA APP CON 127.9 379.9	ATLANTA TOWER 8L-26R 8R-26L 9L-27R 9R-27L 10-28 RWYS 119.1 125.325 123.85 119.3 119.5 254.4	ALL RWYS 121.9 121.75 121.65 254.4
DEP 125.55			



ELEV 1026	TDZE 1000
------------------	------------------



CATEGORY	A	B	C	D
S-ILS 10	CAT II RA 180/12		100 DA 1100	
S-ILS 10	CAT IIIa RVR 07			
S-ILS 10	CAT IIIb		NA	
S-ILS 10	CAT IIIc		NA	



CATEGORY II & III ILS - SPECIAL AIRCREW & AIRCRAFT CERTIFICATION REQUIRED

SE-4, 31 JAN 2019 to 28 FEB 2019

SE-4, 31 JAN 2019 to 28 FEB 2019