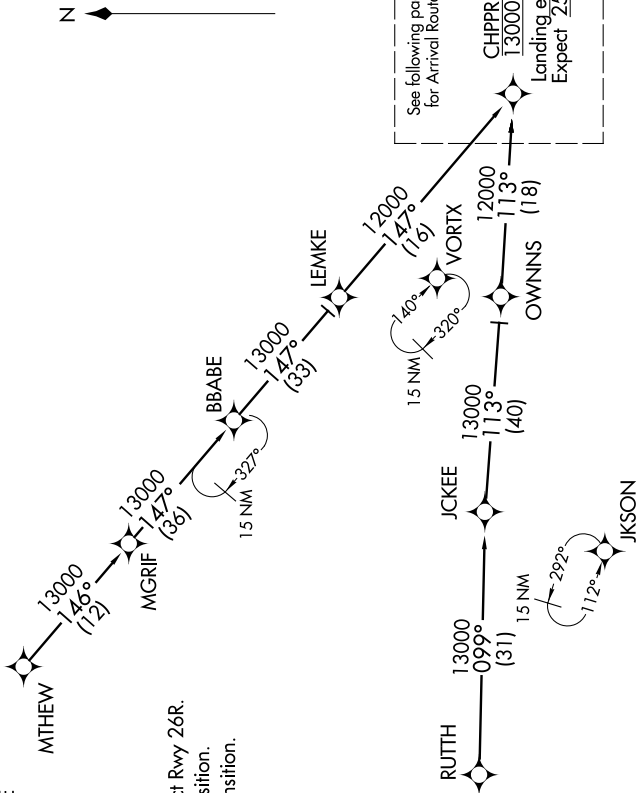


CHPPR ONE ARRIVAL (RNAV) Transition Routes

SE-4, 31 JAN 2019 to 28 FEB 2019

D-ATIS ARR
119.65
ATLANTA APP CON
128.0 379.9

BBABE TRANSITION (BBABE.CHPPR1): For KHSV departures or assigned by ATC only.
LEMKE TRANSITION (LEMKE.CHPPR1): For KCHA departures or assigned by ATC only.
MTHW TRANSITION (MTHW.CHPPR1)
RUITH TRANSITION (RUITH.CHPPR1)



- NOTE: RADAR required.
- NOTE: RNAV 1.
- NOTE: DME/DME/IRU or GPS required.
- NOTE: Turbojet aircraft only.
- NOTE: Landing east select Rwy 8L, landing west select Rwy 26R.
- NOTE: Landing Rwy 9R: Select DFINS approach transition.
- NOTE: Landing Rwy 9L: Select AAKAY approach transition.

(CONTINUED ON FOLLOWING PAGES)

NOTE: Chart not to scale.

SE-4, 31 JAN 2019 to 28 FEB 2019