

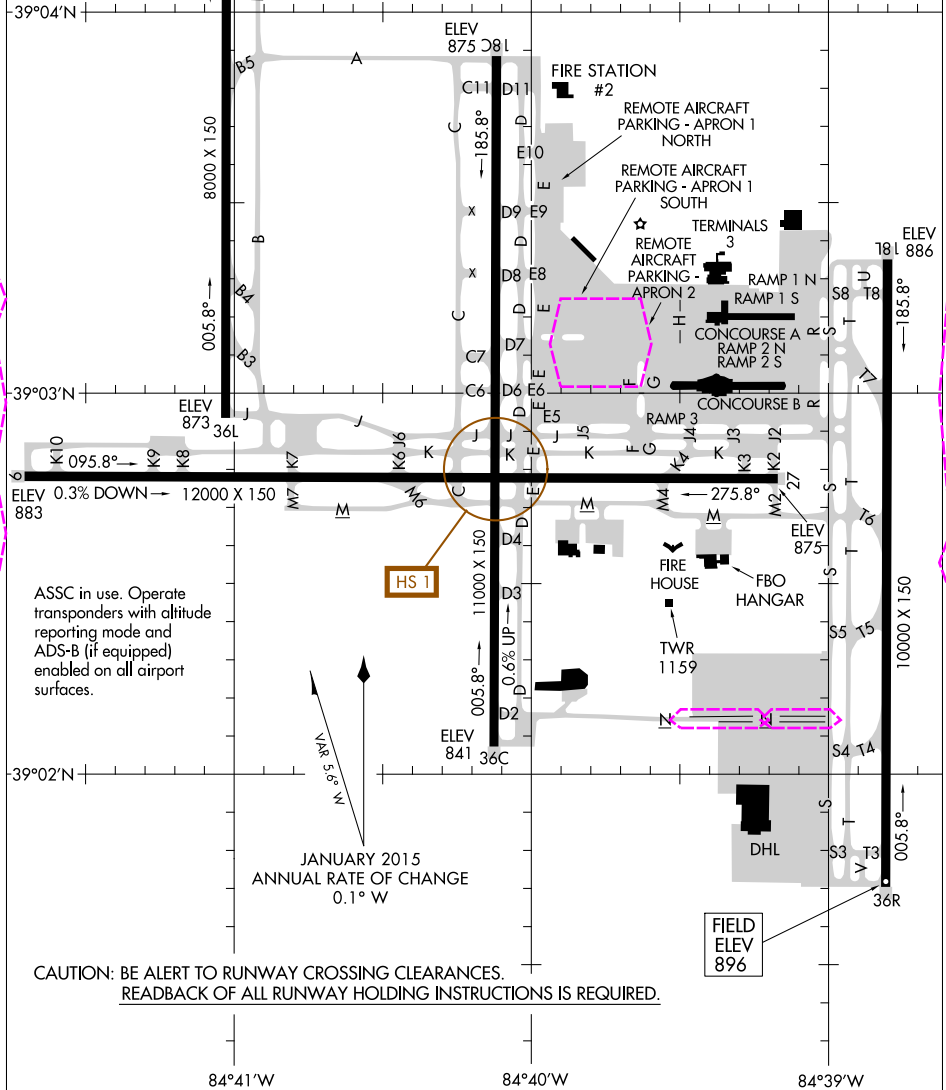
18200

AIRPORT DIAGRAM

CINCINNATI/NORTHERN KENTUCKY INTL (CVG)
AL-655 (FAA) COVINGTON, KENTUCKY

D-ATIS ARR 134.375
 DEP 135.3
 CINCINNATI TOWER
 118.3 (RWYS 18C/36C, 09/27)
 118.975 360.85 (RWY 18L/36R)
 133.325 (RWY 18R/36L)
 GND CON
 121.7
 CLNC DEL
 127.175
D

RWY 09-27
 PCN 101 R/B/W/T
 S-120, D-250, 2D-550, 2D/2D2-875
 RWY 18C-36C
 PCN 112 F/C/W/T
 S-120, D-250, 2D-550, 2D/2D2-875
 RWY 18L-36R
 PCN 127 R/B/W/T
 S-120, D-250, 2D-550, 2D/2D2-875
 RWY 18R-36L
 PCN 170 R/B/W/T
 S-120, D-250, 2D-550, 2D/2D2-875



AIRPORT DIAGRAM

18200

COVINGTON, KENTUCKY
CINCINNATI/NORTHERN KENTUCKY INTL (CVG)

SE-1, 06 DEC 2018 to 03 JAN 2019

SE-1, 06 DEC 2018 to 03 JAN 2019

19003

AIRPORT DIAGRAM

CINCINNATI/NORTHERN KENTUCKY INTL (CVG)

AL-655 (FAA)

COVINGTON, KENTUCKY

D-ATIS ARR 134.375
DEP 135.3

CINCINNATI TOWER

118.3 (RWYS 18C/36C, 09/27)

118.975 360.85 (RWY 18L/36R)

133.325 (RWY 18R/36L)

GND CON

121.7

CLNC DEL

127.175

D

RWY 09-27

PCN 101 R/B/W/T
S-120, D-250, 2D-550, 2D/2D2-875

RWY 18C-36C

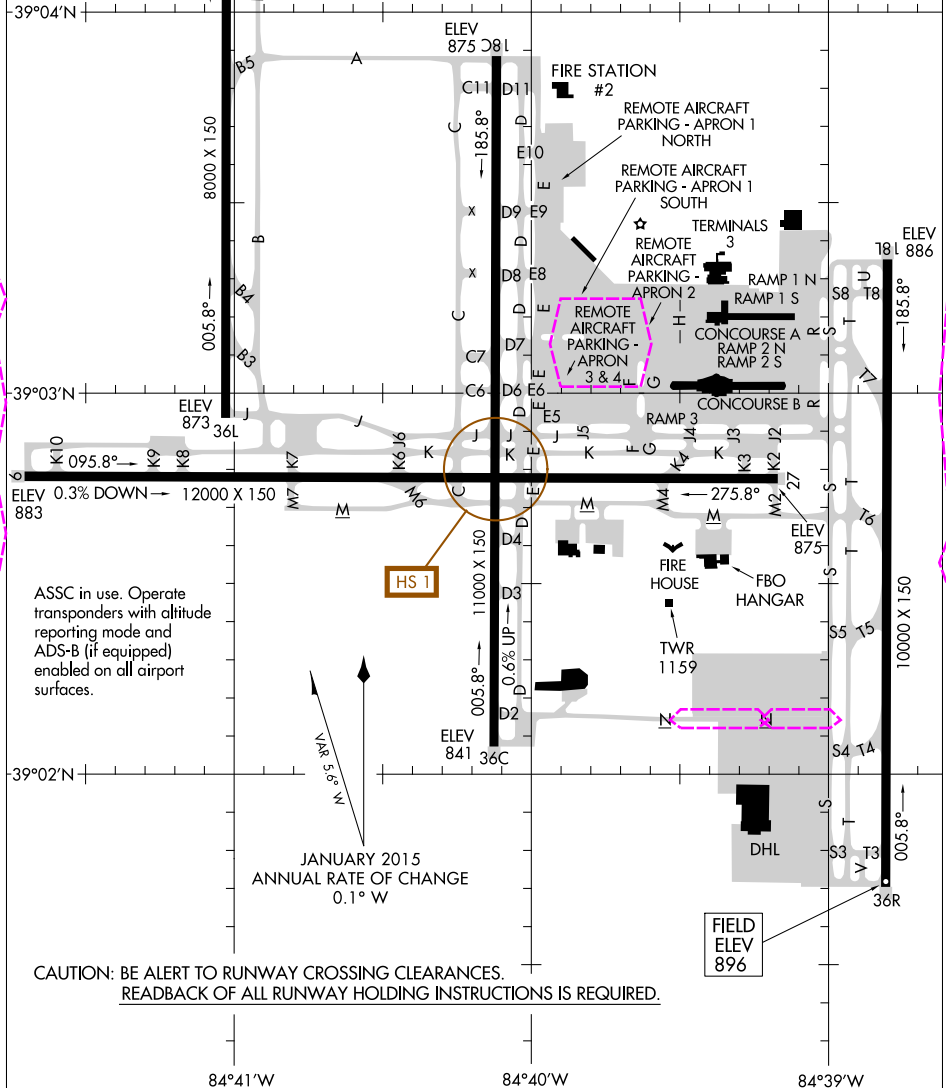
PCN 112 F/C/W/T
S-120, D-250, 2D-550, 2D/2D2-875

RWY 18L-36R

PCN 127 R/B/W/T
S-120, D-250, 2D-550, 2D/2D2-875

RWY 18R-36L

PCN 170 R/B/W/T
S-120, D-250, 2D-550, 2D/2D2-875



ASSC in use. Operate transponders with altitude reporting mode and ADS-B (if equipped) enabled on all airport surfaces.

HS 1
JANUARY 2015
ANNUAL RATE OF CHANGE
0.1° W

**CAUTION: BE ALERT TO RUNWAY CROSSING CLEARANCES.
READBACK OF ALL RUNWAY HOLDING INSTRUCTIONS IS REQUIRED.**

AIRPORT DIAGRAM

19003

CINCINNATI/NORTHERN KENTUCKY INTL (CVG)

COVINGTON, KENTUCKY

AL-655 (FAA)