

APP CRS	Rwy Idg	3164
356°	TDZE	831
	Apt Elev	842

RNAV (GPS) RWY 36

NEW LONDON (W90)

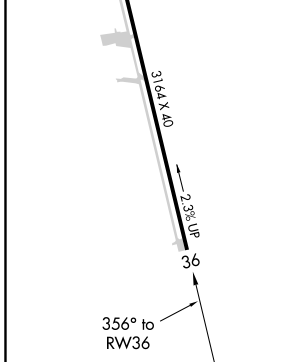
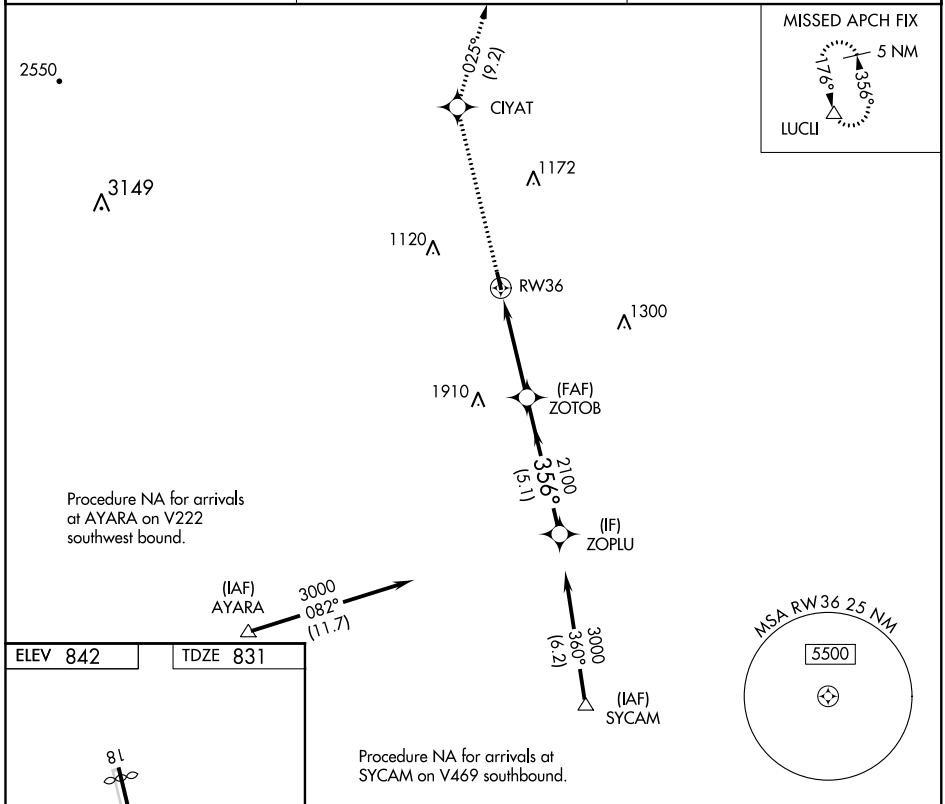
NA DME/DME RNP-0.3 NA. Visibility reduction by helicopters NA. Use Lynchburg Rgnl/Preston Glenn Field altimeter setting. Procedure NA at night.

MISSED APPROACH: Climb to 4700 direct CIYAT and on track 025° to LUCLI and hold.

LYNCHBURG ATIS
119.8

ROANOKE APP CON
135.0 254.325

UNICOM
122.8 (CTAF)



4700	CIYAT	LUCLI	ZOPLU
↑	\diamond tr 025°	Δ	
RW36		ZOTOB	3000
3.00° TCH 40		2100	356°
4.1 NM		5.1 NM	
CATEGORY	A	B	C D
LNAV MDA	1780-3 949 (1000-3)		NA
CIRCLING	1780-3 938 (1000-3)		NA

NE-3, 03 JAN 2019 to 31 JAN 2019

NE-3, 03 JAN 2019 to 31 JAN 2019