

WAAS CH <b>62936</b> <b>W30A</b>	APP CRS <b>296°</b>	Rwy Idg TDZE <b>1647</b> Apt Elev <b>1650</b>	<b>3550</b>
--	------------------------	---	-------------

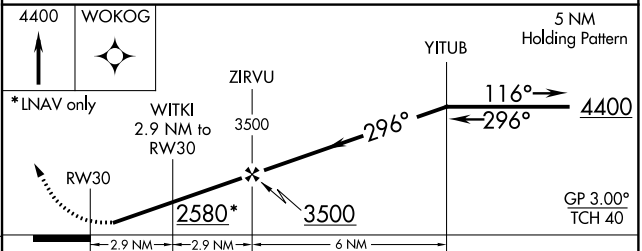
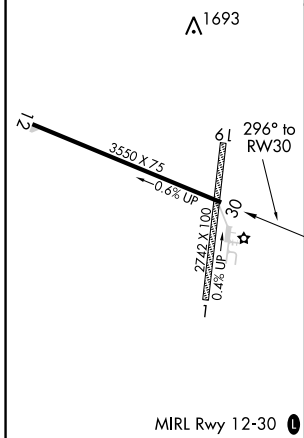
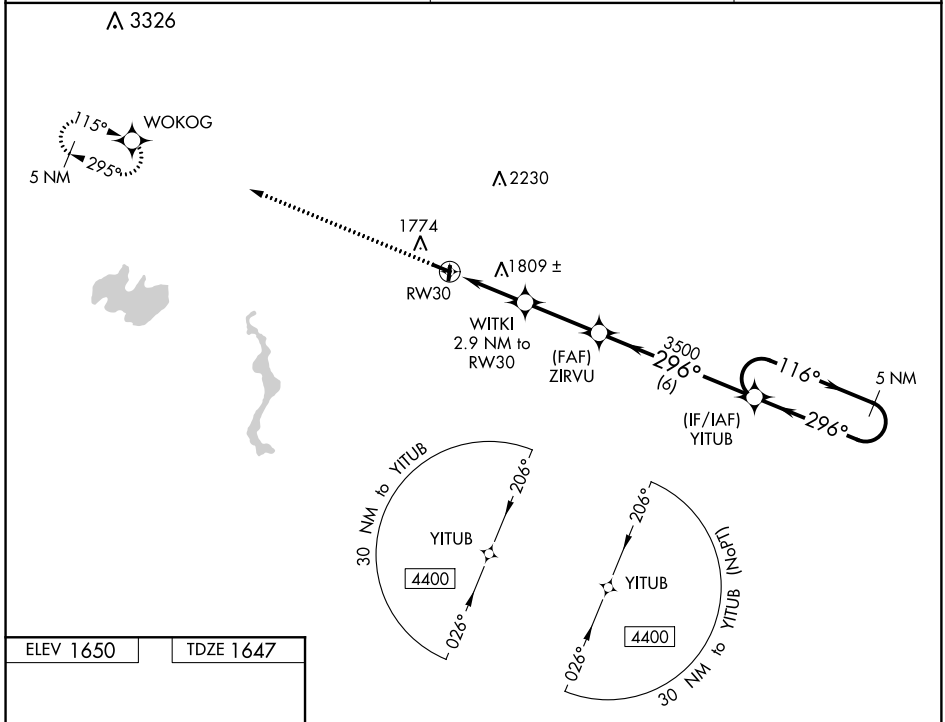
# RNAV (GPS) RWY 30

CRANDON/STEVE CONWAY MUNI (Y55)

**Baro-VNAV NA. DME/DME RNP-0.3 NA. Night landing: Rwy 30 NA. Helicopter visibility reduction below 1 SM NA. Use Rhinelander climeter setting, when not received use Eagle River climeter setting and increase all DA 9 feet and all MDA 20 feet, increase LPV all cats visibility 1/8 mile. Circling to Rwys 1, 19 NA.**

**MISSED APPROACH:** Climb to 4400 direct WOKOG and hold.

RHINELANDER-ONEIDA COUNTY ASOS <b>126.825</b>	MINNEAPOLIS CENTER <b>133.65 281.5</b>	CTAF <b>122.9</b>
--	---	----------------------



CATEGORY	A	B	C	D
LPV DA	1955-1 308 (400-1)			NA
LNAV/VNAV DA	2005-1¼ 358 (400-1¼)			NA
LNAV MDA	2120-1	473 (500-1)	2120-1¾ 473 (500-1¾)	NA
<b>CIRCLING</b>	2300-1 650 (700-1)	2340-1 690 (700-1)	2360-2 710 (800-2)	NA