

WAAS CH 58036 W12A	APP CRS 115°	Rwy Idg 3550 TDZE 1650 Apt Elev 1650
--	------------------------	---

RNAV (GPS) RWY 12

CRANDON/STEVE CONWAY MUNI (Y55)

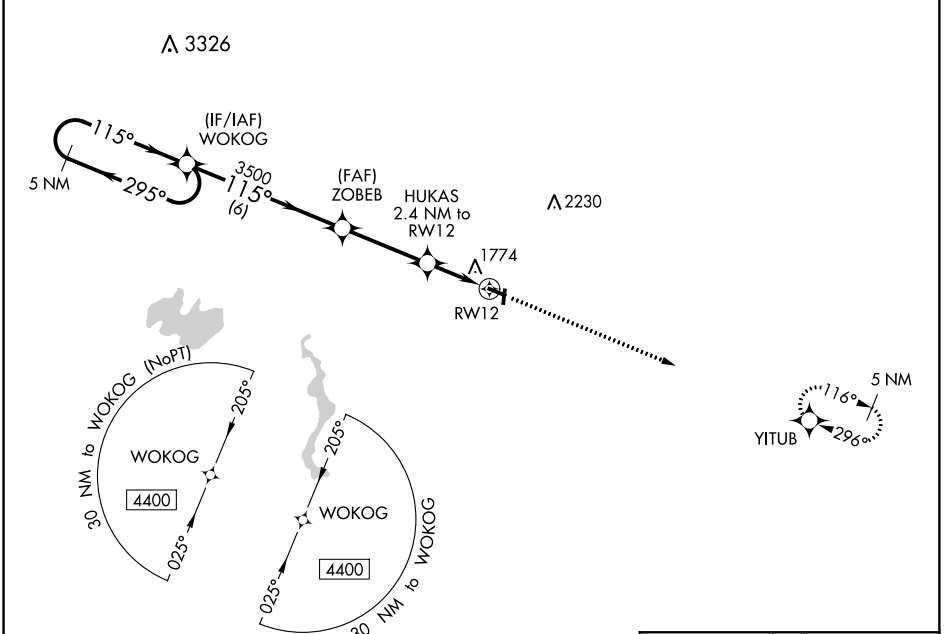
Baro-VNAV NA. DME/DME RNP-0.3 NA. Night landing: Rwy 30 NA. Use Rhineland
altimeter setting, when not received use Eagle River altimeter setting and increase all DA 9 feet
and MDA 20 feet. Helicopter visibility reduction below 3/4 SM NA. Circling to Rwys 1, 19 NA.

MISSED APPROACH:
 Climb to 4400 direct
 YITUB and hold.

RHINELANDER-ONEIDA COUNTY ASOS
126.825

MINNEAPOLIS CENTER
133.65 281.5

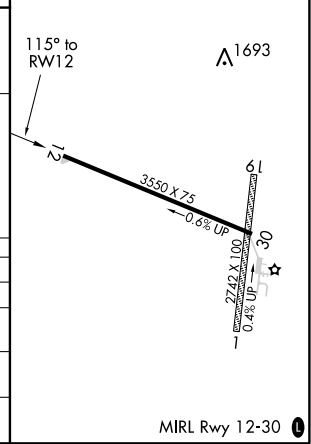
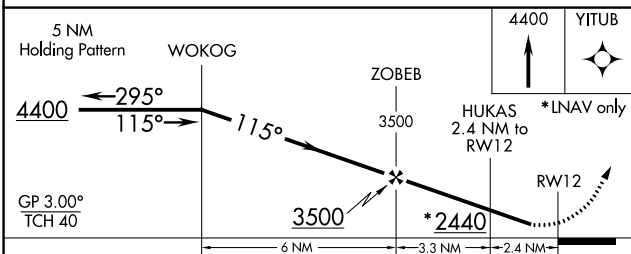
CTAF
122.9 0



EC-3, 03 JAN 2019 to 31 JAN 2019

EC-3, 03 JAN 2019 to 31 JAN 2019

ELEV 1650 TDZE 1650



CATEGORY	A	B	C	D
LPV DA	2054-1 3/8	404 (500-1 3/8)		NA
LNAV/VNAV DA	2350-2 1/2	700 (700-2 1/2)		NA
LNAV MDA	2260-1	610 (700-1)	2260-1 3/8 610 (700-1 3/8)	NA
CIRCLING	2300-1 650 (700-1)	2340-1 690 (700-1)	2360-2 710 (800-2)	NA