

CENTRE, ALABAMA

AL-10343 (FAA)

17061

WAAS CH <b>48927</b> <b>W07A</b>	APP CRS <b>067°</b>	Rwy Idg TDZE Apt Elev	<b>5500</b> <b>585</b> <b>595</b>
--	------------------------	-----------------------------	---

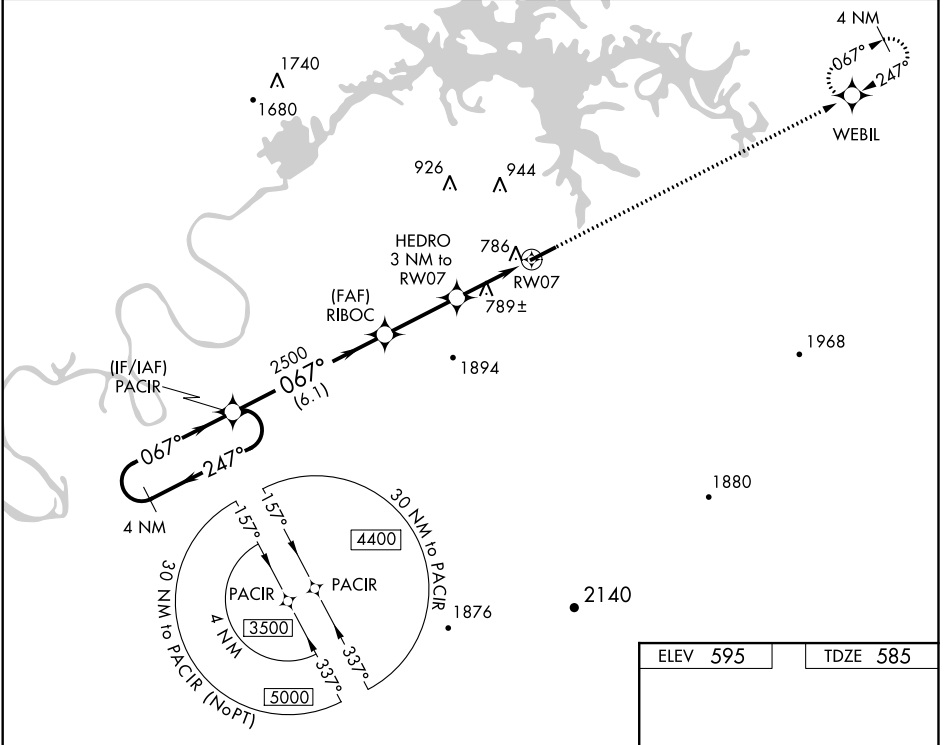
# RNAV (GPS) RWY 7

CENTRE-PIEDMONT CHEROKEE COUNTY RGNL (PYP)

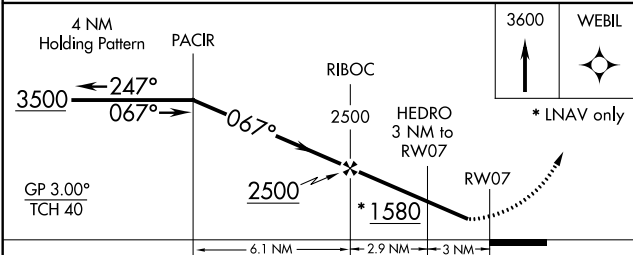
**Baro-VNAV NA. DME/DME RNP-0.3 NA. Helicopter visibility reduction below 3/4 SM NA.**  
**Use Gadsden altimeter setting; when not received use Anniston altimeter setting and increase all DA/MDA 20 feet; increase LPV all Cats and LNAV Cats C/D visibility 1/2 mile.**

**MISSED APPROACH:**  
Climb to 3600 direct WEBIL and hold.

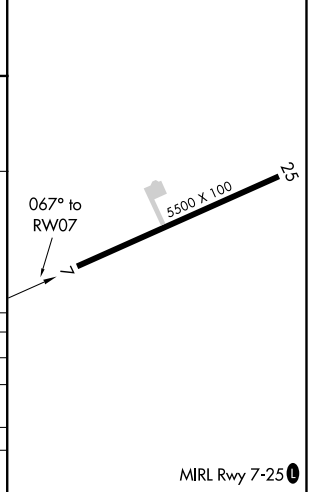
GADSDEN AWOS-3 <b>127.825</b>	ATLANTA CENTER <b>124.5 270.325</b>	CTAF <b>122.9</b>
----------------------------------	--	----------------------



ELEV 595	TDZE 585
----------	----------



CATEGORY	A	B	C	D
LPV DA		896-1	311 (400-1)	
LNAV/ VNAV DA		1009-1½	424 (500-1½)	
LNAV MDA	1100-1	515 (600-1)	1100-1¾	515 (600-1¾)
CIRCLING	1160-1	565 (600-1)	1160-1½	1160-2 565 (600-2)



MIRL Rwy 7-25

CENTRE, ALABAMA  
Amdt 1A 28MAY15

CENTRE-PIEDMONT CHEROKEE COUNTY RGNL (PYP)  
34°05'N-85°37'W

# RNAV (GPS) RWY 7

SE-4, 03 JAN 2019 to 31 JAN 2019

SE-4, 03 JAN 2019 to 31 JAN 2019