

WAAS CH 72727 W25A	APP CRS 247°	Rwy Idg TDZE Apt Elev	5500 595 595
--	------------------------	-----------------------------	---

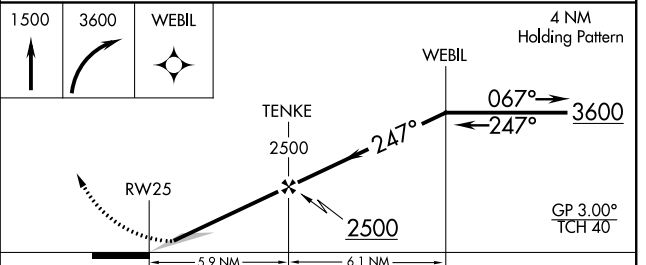
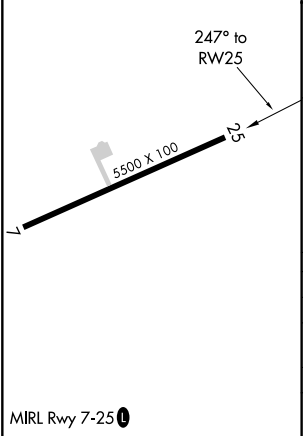
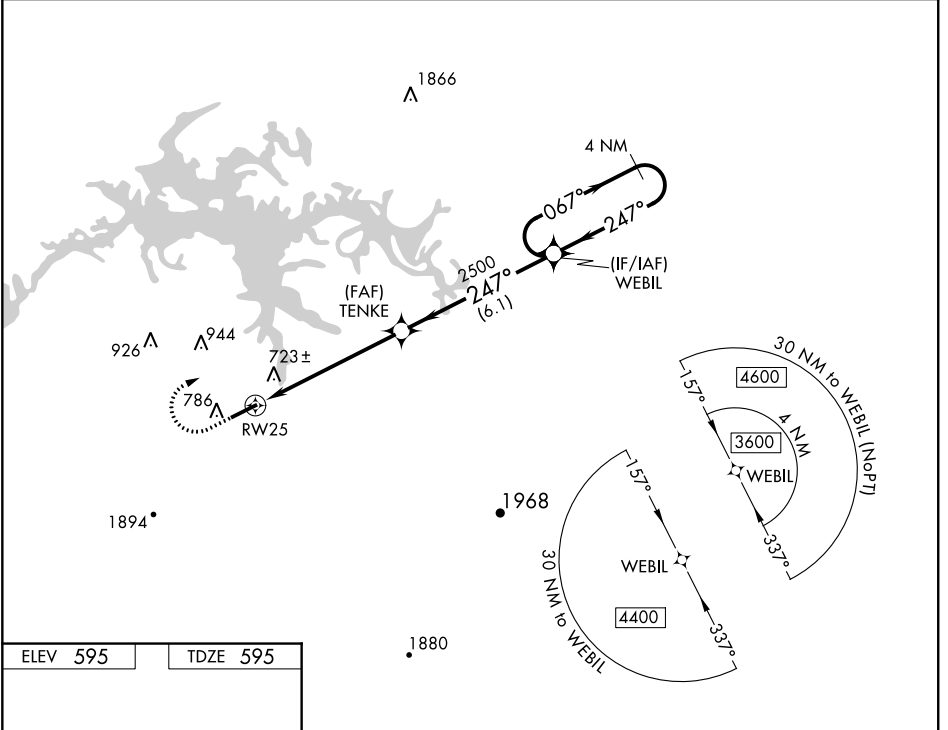
RNAV (GPS) RWY 25

CENTRE-PIEDMONT CHEROKEE COUNTY RGNL (PYP)

NA Baro-VNAV NA. DME/DME RNP-0.3 NA. Use Gadsden altimeter setting, when not received, use Anniston altimeter setting and increase all DA/MDA 20 feet.

MISSED APPROACH: Climb to 1500 then climbing right turn to 3600 direct WEBIL and hold.

GADSDEN AWOS-3 127.825	ATLANTA CENTER 124.5 270.325	CTAF 122.9
----------------------------------	--	----------------------



CATEGORY	A	B	C	D
LPV DA	856-7 ⁸ / ₈		261 (300-7 ⁸ / ₈)	
LNAV/VNAV DA	1064-1 ⁵ / ₈		469 (500-1 ⁵ / ₈)	
LNAV MDA	1180-1 585 (600-1)		1180-1 ³ / ₄ 585 (600-1 ³ / ₄)	
CIRCLING	1180-1 585 (600-1)		1180-1 ³ / ₄ 585 (600-1 ³ / ₄)	1180-2 585 (600-2)

SE-4, 03 JAN 2019 to 31 JAN 2019

SE-4, 03 JAN 2019 to 31 JAN 2019