

APP CRS 305°	Rwy Idg TDZE Apt Elev	N/A N/A 781
------------------------	-----------------------------	--

RNAV (GPS)-A
HORSESHOE BEND (6M2)

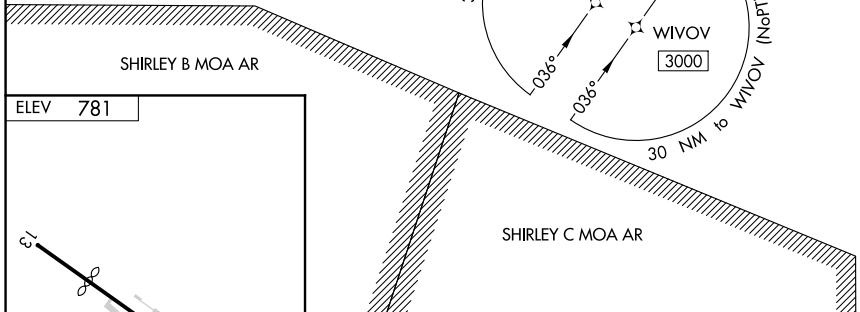
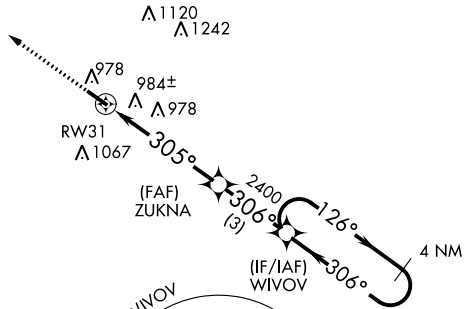
▼ Helicopter visibility reduction below 1 SM NA. DME/DME RNP-0.3 NA.
▲ NA Procedure NA at night. Use Mountain Home altimeter setting; when not received, use Batesville altimeter setting.

MISSED APPROACH: Climb to 3500 direct OTSAY and hold.

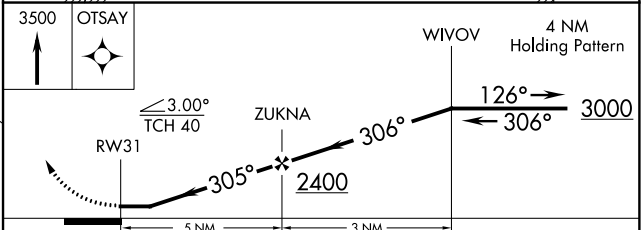
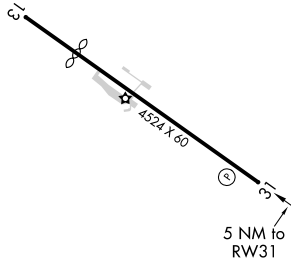
BAXTER COUNTY ASOS
133.975

MEMPHIS CENTER
120.075 289.4

UNICOM
122.8 (CTAF) 0



ELEV 781



CATEGORY	A	B	C	D
C CIRCLING	1440-1	659 (700-1)		NA

SC-1, 03 JAN 2019 to 31 JAN 2019

SC-1, 03 JAN 2019 to 31 JAN 2019