

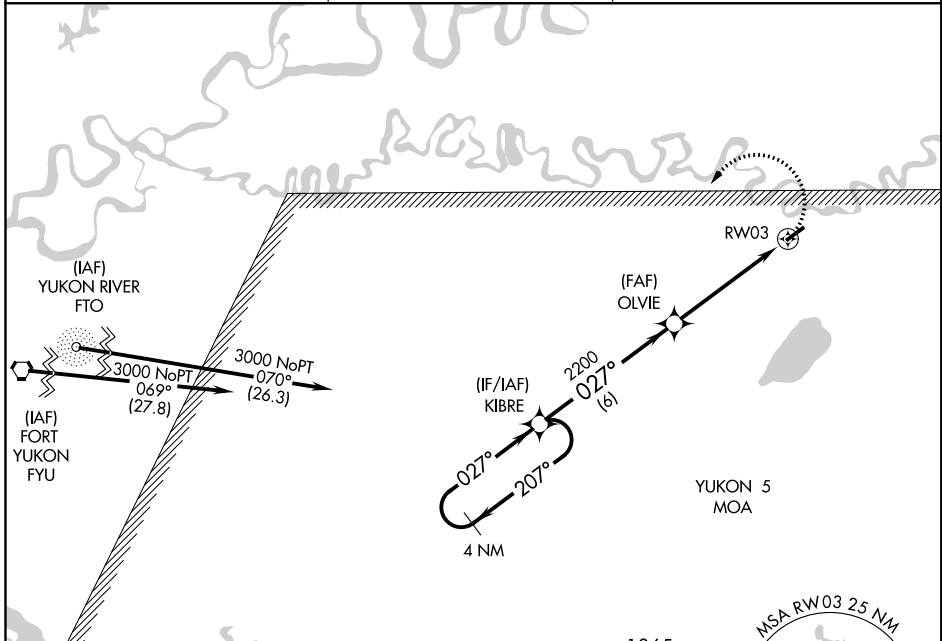
APP CRS <b>027°</b>	Rwy Idg TDZE Apt Elev	<b>4000</b> <b>538</b> <b>544</b>
------------------------	-----------------------------	---

# RNAV (GPS) RWY 3

CHALKYITSIK (CIK) (PACI)

NA -32°C	DME/DME RNP-0.3 NA. Use Fort Yukon altimeter setting.	MISSED APPROACH: Climbing left turn to 3000 direct KIBRE and hold.
-------------	--	---

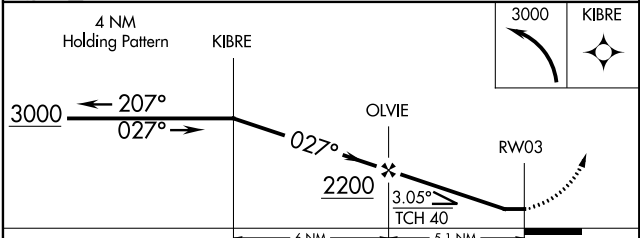
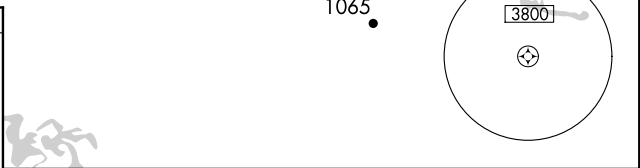
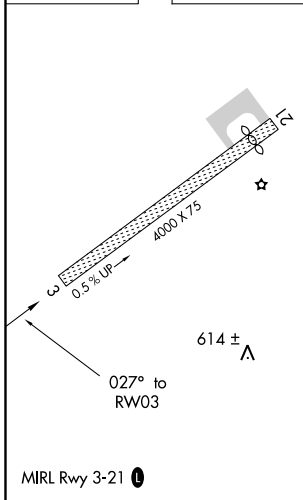
FORT YUKON AWOS-3 <b>125.8</b>	ANCHORAGE CENTER <b>135.0 225.4</b>	CTAF <b>122.9</b>
-----------------------------------	--	----------------------



AK, 03 JAN 2019 to 28 FEB 2019

AK, 03 JAN 2019 to 28 FEB 2019

ELEV 544	TDZE 538
----------	----------



CATEGORY	A	B	C	D
LNAV MDA	1020-1	482 (500-1)	1020-1¼ 482 (500-1¼)	NA
CIRCLING	1120-1 576 (600-1)	1180-1 636 (700-1)	1220-2 676 (700-2)	NA