

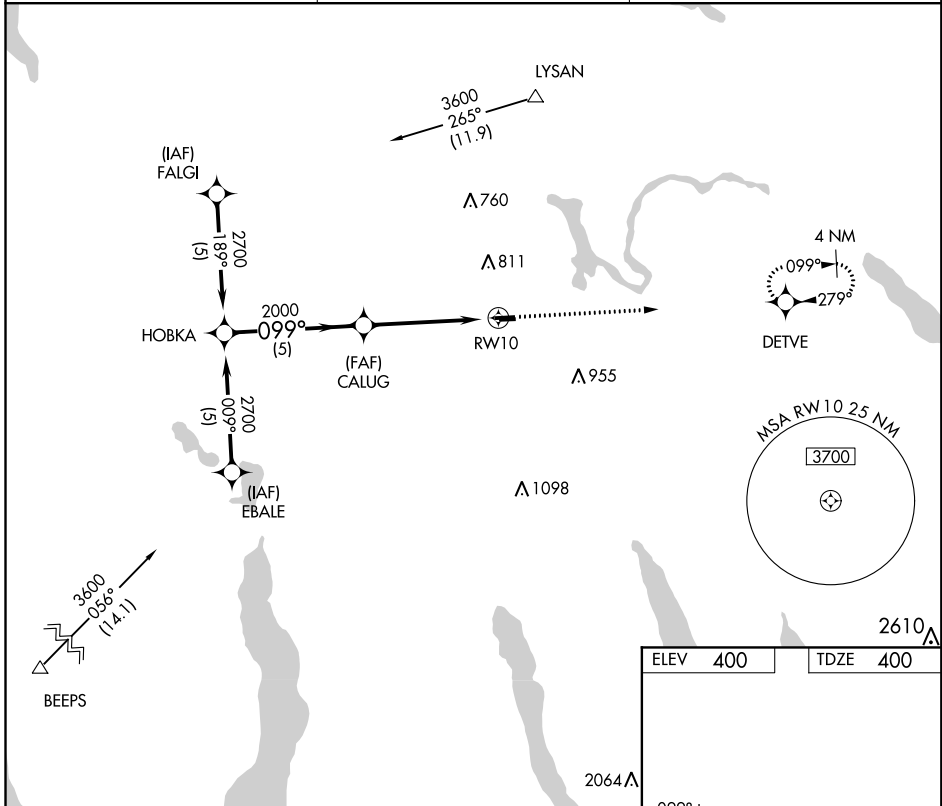
APP CRS 099°	Rwy Idg 3200
	TDZE 400
	Apt Elev 400

RNAV (GPS) RWY 10

WHITFORDS (B16)

<p>▼ Use Syracuse altimeter setting: DME/DME RNP-0.3 NA. ▲ NA Procedure NA at night. Rwy 10 helicopter visibility reduction below 1 SM NA.</p>	<p>MISSED APPROACH: Climb to 3000 direct DETVE WP and hold.</p>
---	--

<p>SYRACUSE APP CON 134.275 279.6</p>	<p>UNICOM 122.8 (CTAF)</p>	<p>122.70</p>
--	---------------------------------------	----------------------



<p>HOBKA 2700</p> <p>Procedure Turn NA</p>	<p>CALUG 2000</p> <p>3.04° TCH 40</p>	<p>RWY 10</p>	<p>3000</p> <p>↑</p>	<p>DETVE</p> <p>✦</p>	<p>099° to RWY 10</p>
			<p>5.0 NM</p>	<p>4.8 NM</p>	<p>3630 X 60</p> <p>28</p> <p>2800 X 100</p>
CATEGORY	A	B	C	D	
LNAV MDA	1020-1	620 (700-1)		NA	
CIRCLING	1020-1 620 (700-1)	1060-1 660 (700-1)		NA	

MIRL Rwy 10-28

NE-2, 03 JAN 2019 to 31 JAN 2019

NE-2, 03 JAN 2019 to 31 JAN 2019