

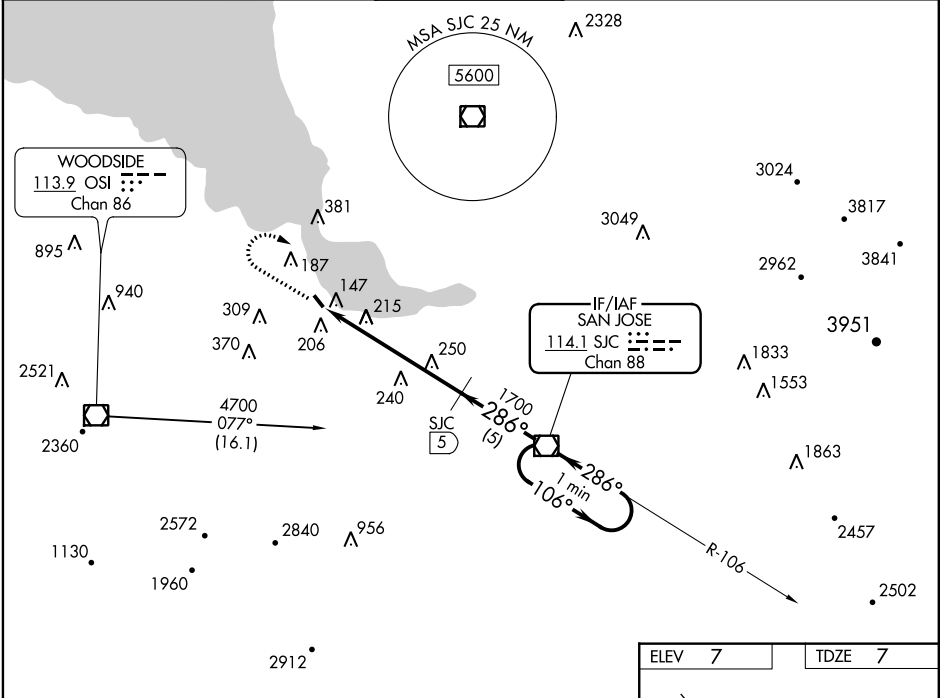
VOR/DME SJC 114.1 Chan 88	APP CRS 286°	Rwy Idg 2443 TDZE 7 Apt Elev 7
---	------------------------	---

VOR/DME RWY 31

PALO ALTO (PAO)

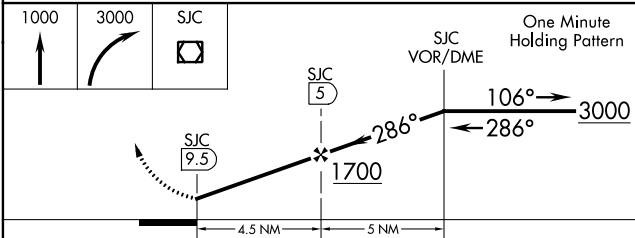
<p>▽ Circling NA SW of Rwy 13-31. ▲ When control tower closed, use Norman Y Mineta San Jose Intl altimeter setting.</p>	<p>MISSED APPROACH: Climb to 1000 then climbing right turn to 3000 direct SJC VOR/DME and hold.</p>
---	---

ATIS 135.275	NORCAL APP CON 121.3 270.35	PALO ALTO TOWER* 118.6 (CTAF)	GND CON 125.0	UNICOM 122.95
------------------------	---------------------------------------	--	-------------------------	-------------------------

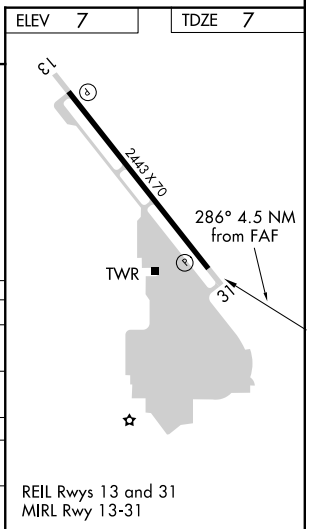


SW-2, 03 JAN 2019 to 31 JAN 2019

SW-2, 03 JAN 2019 to 31 JAN 2019



CATEGORY	A	B	C	D
S-31	500-1	493 (500-1)		NA
CIRCLING	500-1 493 (500-1)	540-1 533 (600-1)		NA
NORMAN Y MINETA SAN JOSE INTL ALTIMETER SETTING MINIMUMS				
S-31	540-1	533 (600-1)		NA
CIRCLING	540-1 533 (600-1)	580-1 573 (600-1)		NA



REIL Rws 13 and 31
MIRL Rwy 13-31