

WAAS CH 77801 W21A	APP CRS 216°	Rwy Idg TDZE 1221 Apt Elev 1221	5000
---------------------------------	------------------------	---	-------------

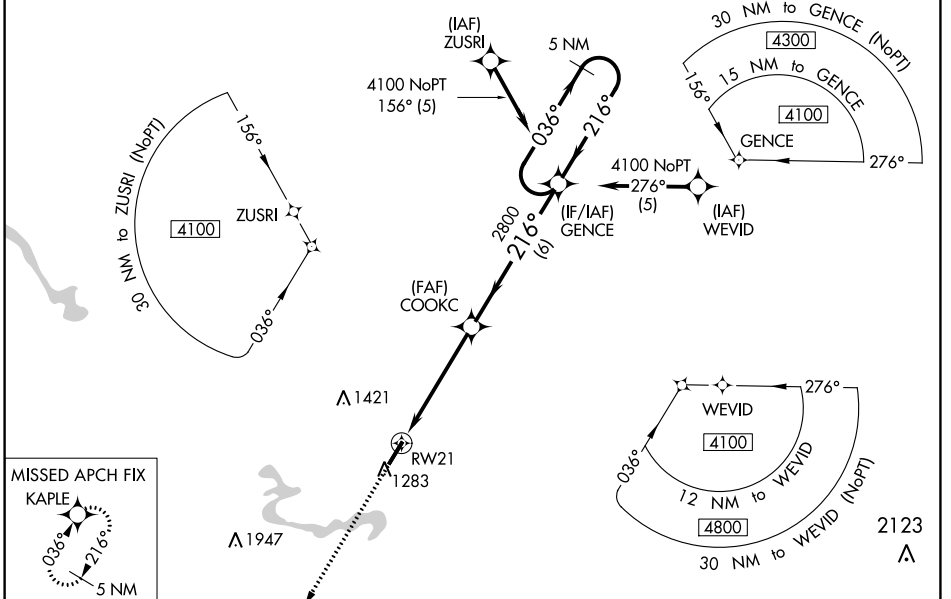
RNAV (GPS) RWY 21

BIG SANDY RGNL (SJS)

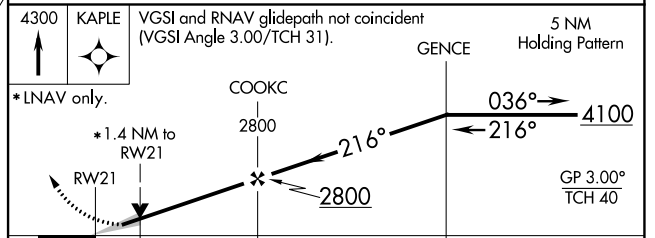
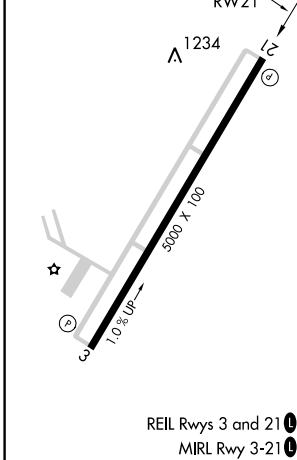
⚠ For uncompensated Baro-VNAV systems, LNAV/VNAV NA below -17°C (2°F) or above 54°C (130°F). DME/DME RNP-0.3 NA. Circling to Rwy 3 NA at night. When local altimeter setting not received, use Jackson altimeter setting and increase all DA 101 feet and all MDA 120 feet; increase LPV all Cats visibility ¼ mile, increase LNAV/VNAV all Cats and LNAV Cats C/D visibilities ⅜ mile, and increase Circling Cat C visibility ½ mile, Cat D visibility ¼ mile. Baro-VNAV and VDP NA when using Jackson altimeter setting.

⚠ MISSED APPROACH: Climb to 4300 direct KAPLE and hold.

AWOS-3 120.175	HUNTINGTON APP CON 119.75 270.1	UNICOM 123.05 (CTAF) 0
--------------------------	---	----------------------------------



ELEV 1221	TDZE 1221
-----------	-----------



CATEGORY	A	B	C	D
LPV DA		1471-¾	250 (300-¾)	
LNAV/VNAV DA		1739-1⅓	518 (600-1⅓)	
LNAV MDA	1700-1	479 (500-1)	1700-1⅓	479 (500-1⅓)
C CIRCLING	1760-1	539 (600-1)	1920-2 699 (700-2)	2060-2¾ 839 (900-2¾)

SE-1, 03 JAN 2019 to 31 JAN 2019

SE-1, 03 JAN 2019 to 31 JAN 2019