

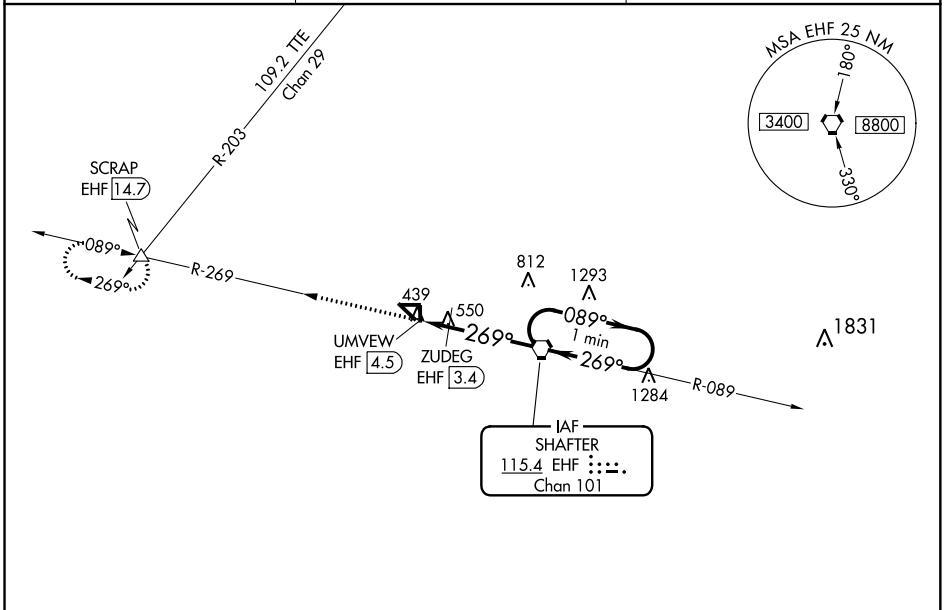
VORTAC EHF 115.4 Chan 101	APP CRS 269°	Rwy Idg TDZE Apt Elev	N/A N/A 425
---	------------------------	-----------------------------	--

VOR-A
SHAFTER-MINTER FIELD (MIT)

NA Circling to Rwy 17, 35, 8 and 26 NA at night. When local altimeter setting not received, use Bakersfield altimeter setting and increase all MDAS 40 feet and increase Cat C visibility to 1/4.

MISSED APPROACH: Climb to 4000 on EHF VORTAC R-269 to SCRAP INT/EHF 14.7 DME and hold, continue climb-in-hold to 4000.

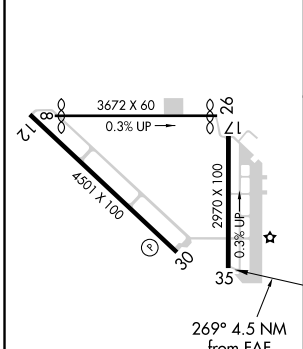
AWOS-3 121.125	BAKERSFIELD APP CON 126.45 270.3	CTAF 122.9
--------------------------	--	----------------------



SW-3, 03 JAN 2019 to 31 JAN 2019

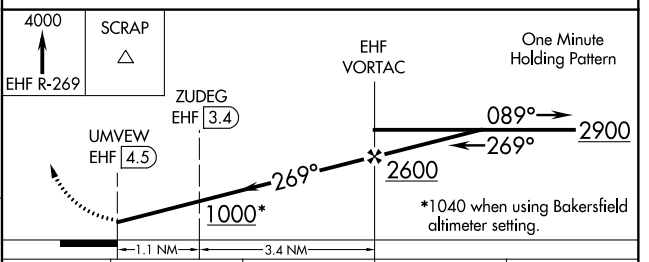
SW-3, 03 JAN 2019 to 31 JAN 2019

ELEV 425



HIRL Rwy 12-30

FAF to MAP 4.5 NM					
Knots	60	90	120	150	180
Min:Sec	4:30	3:00	2:15	1:48	1:30



CATEGORY	A		B		C	D
CIRCLING	1000-1		575 (600-1)		1000-1½ 575 (600-1½)	NA
ZUDEG FIX MINIMUMS						
CIRCLING	900-1		475 (500-1)		900-1½ 475 (500-1½)	NA