

WAAS CH <b>82517</b> <b>W12A</b>	APP CRS <b>120°</b>	Rwy Idg <b>4501</b> TDZE <b>413</b> Apt Elev <b>425</b>
--	------------------------	---

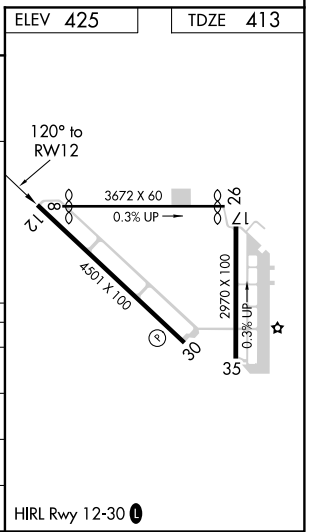
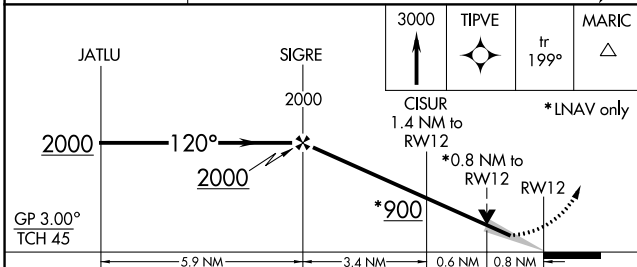
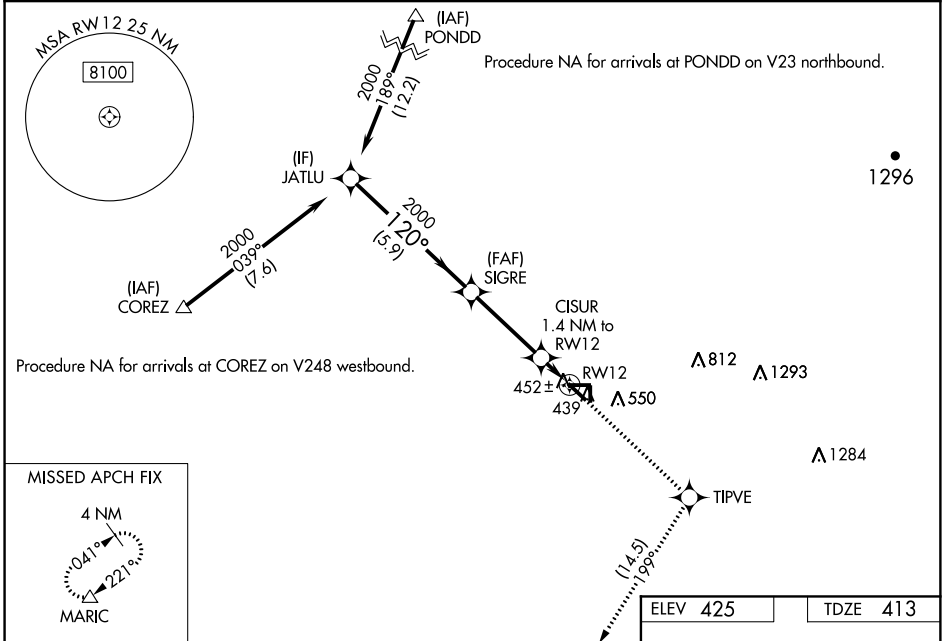
# RNAV (GPS) RWY 12

SHAFTER-MINTER FIELD (MIT)

**NA** Baro-VNAV NA when using Bakersfield altimeter setting. For uncompensated Baro-VNAV systems, LNAV/VNAV NA below -15°C (5°F) or above 54°C (130°F).  
When local altimeter setting not received, use Bakersfield altimeter setting and increase LPV and LNAV/VNAV DA to 694 feet and LNAV/VNAV visibility to ¾ all Cats; increase all MDA 40 feet. DME/DME RNP-0.3 NA.  
Night Landing Rwy 17, 35, 8, 26 NA.

**MISSED APPROACH:** Climb to 3000 direct TIPVE and on track 199° to MARIC and hold.

AWOS-3 <b>121.125</b>	BAKERSFIELD APP CON <b>126.45 270.3</b>	CTAF <b>122.9</b>
--------------------------	--	----------------------



CATEGORY	A	B	C	D
LPV DA		663-¾ 250 (300-¾)		NA
LNAV/VNAV DA		663-¾ 250 (300-¾)		NA
LNAV MDA		720-1 307 (300-1)		NA
CIRCLING	900-1	475 (500-1)	900-1½ 475 (500-1½)	NA

SW-3, 03 JAN 2019 to 31 JAN 2019

SW-3, 03 JAN 2019 to 31 JAN 2019