

LOC/DME I-IPJ 111.15 Chan 48 (Y)	APP CRS 233°	Rwy Idg TDZE Apt Elev	5501 872 878
---	------------------------	-----------------------------	---

ILS Y or LOC Y RWY 23

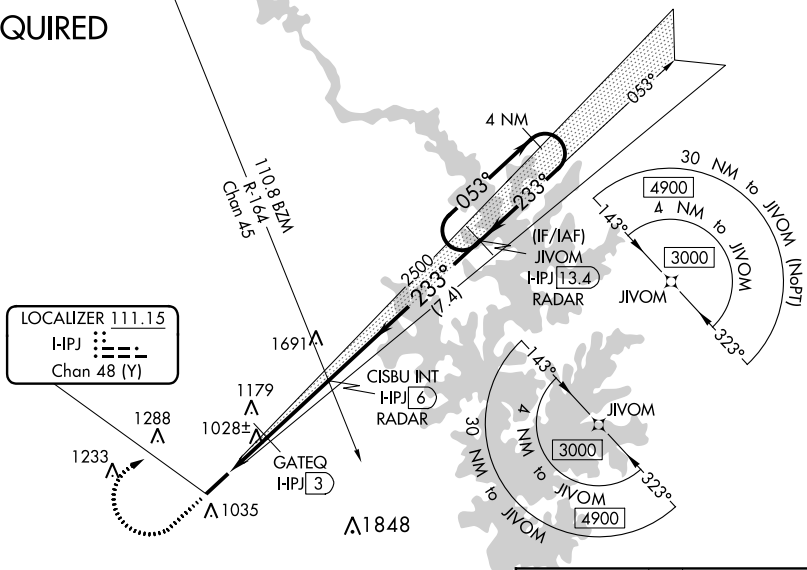
LINCOLNTON-LINCOLN COUNTY RGNL (IPJ)

⚠ When local altimeter setting not received, use Charlotte altimeter setting: increase DA to 1212 feet and visibility 1/8 SM; increase all MDAs 80 feet and visibility S-LOC 23 Cats C/D 1/8 SM and Circling Cats C/D visibility 1/4 SM and GATEQ Fix Minimums Cats C/D 1/4 SM. VDP NA when using Charlotte altimeter setting. Rwy 23 helicopter visibility reduction below 3/4 SM NA.

MISSED APPROACH: Climb to 1600 then climbing right turn to 3100 direct JIVOM I-HPJ 13.4 DME/RADAR and hold (GPS Required).

AWOS-3 119.675	CHARLOTTE APP CON 134.75 257.2	CLNC DEL (GCO) 124.9	UNICOM 123.05 (CTAF) 0
--------------------------	--	--------------------------------	----------------------------------

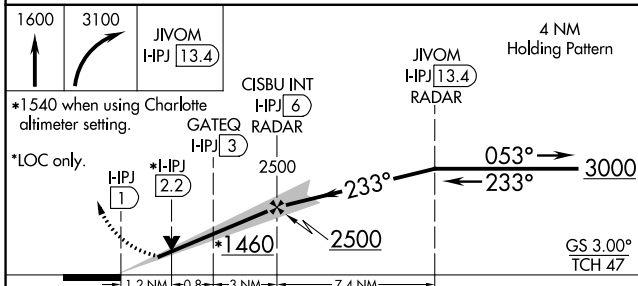
GPS REQUIRED



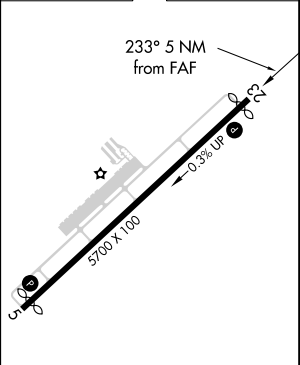
LOCALIZER 111.15
I-HPJ
Chan 48 (Y)

SE-2. 03 JAN 2019 to 31 JAN 2019

SE-2. 03 JAN 2019 to 31 JAN 2019



ELEV 878	TDZE 872
----------	----------



CATEGORY	A	B	C	D
S-ILS 23	1149-7/8 277 (300-7/8)			
S-LOC 23	1460-1	588 (600-1)	1460-1 3/4	588 (600-1 3/4)
C CIRCLING	1460-1	582 (600-1)	1640-2 1/4	1640-2 1/2
			762 (800-2 1/4)	762 (800-2 1/2)
GATEQ FIX MINIMUMS				
S-LOC 23	1280-1	408 (500-1)	1280-1 1/8	408 (500-1 1/8)
C CIRCLING	1400-1	1420-1	1640-2 1/4	1640-2 1/2
	522 (600-1)	542 (600-1)	762 (800-2 1/4)	762 (800-2 1/2)

FAF to MAP 5 NM					
Knots	60	90	120	150	180
Min:Sec	5:00	3:20	2:30	2:00	1:40

REIL Rwy 5 and 23 0
MIRL Rwy 5-23 0