

VORTAC SGD 112.1 Chan 58	APP CRS 276°	Rwy Idg 3602 TDZE 86 Apt Elev 90
---------------------------------------	------------------------	---

VOR RWY 29

PETALUMA MUNI (O69)

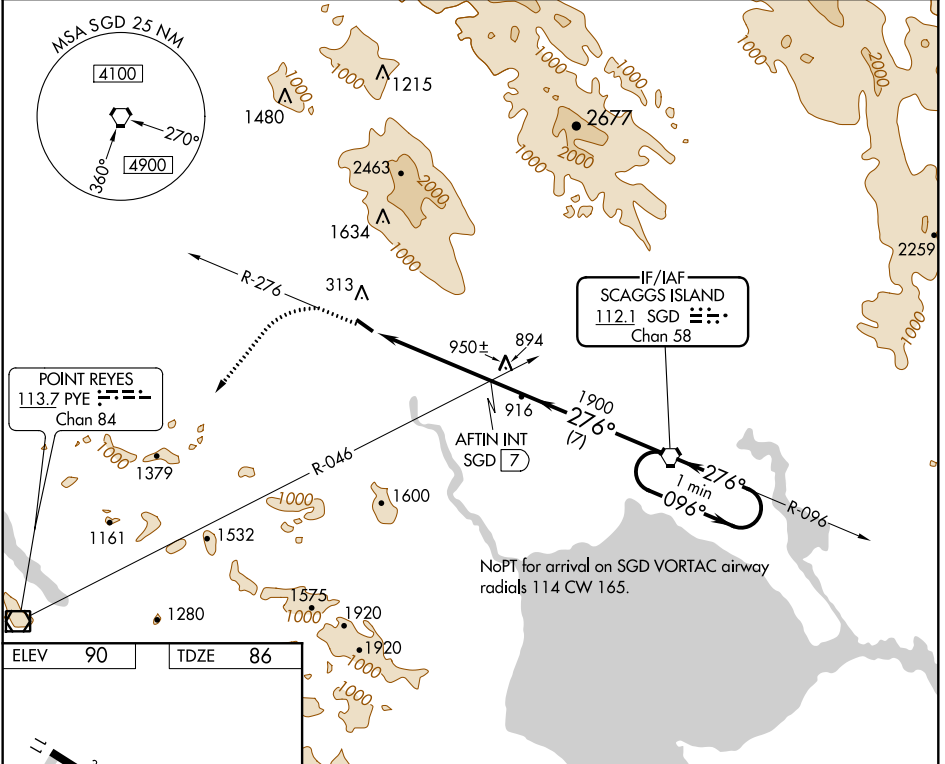
▼ Night landing: Rwy 11 NA, Rwy 29 operational VGSI required, remain on or above VGSI glidepath until threshold.
▲ NA Helicopter visibility reduction below 1 SM NA.

MISSED APPROACH: Climb to 2000 via SGD R-276 then climbing left turn to 3500 direct PYE VOR/DME.

AWOS-3P
132.325

OAKLAND CENTER
127.8 353.5

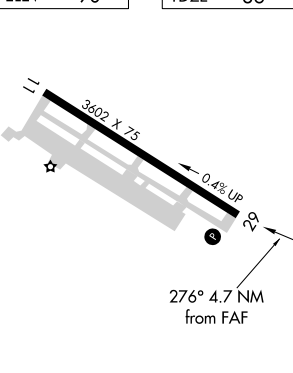
UNICOM
122.7 (CTAF) 0



SW-2, 03 JAN 2019 to 31 JAN 2019

SW-2, 03 JAN 2019 to 31 JAN 2019

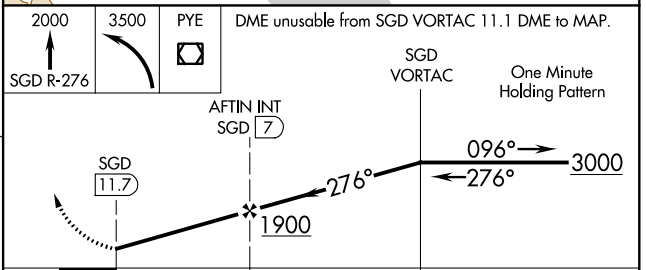
ELEV 90	TDZE 86
---------	---------



MIRL Rwy 11-29 0

FAF to MAP 4.7 NM

Knots	60	90	120	150	180
Min:Sec	4:42	3:08	2:21	1:53	1:34



CATEGORY	A	B	C	D
S-29	1260-1¼ 1174 (1200-1¼)	1260-1½ 1174 (1200-1½)		NA
CIRCLING	1260-1⅛ 1170 (1200-1⅛)	1260-1½ 1170 (1200-1½)		NA