

WAAS CH 56512 W36A	APP CRS 358°	Rwy Idg TDZE 1226 Apt Elev 1226	4001
--	------------------------	---	-------------

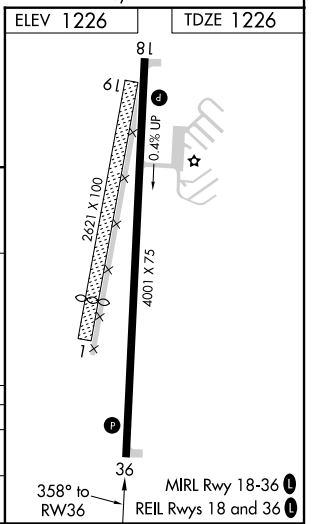
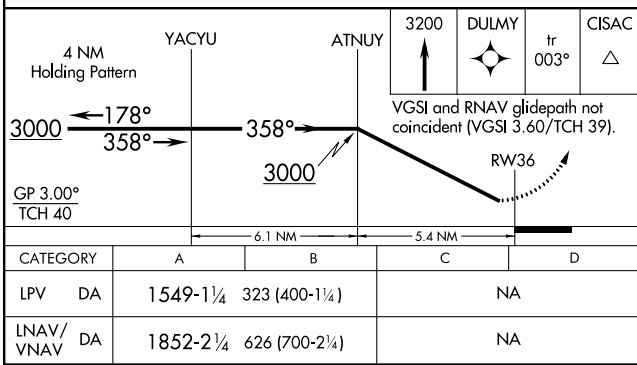
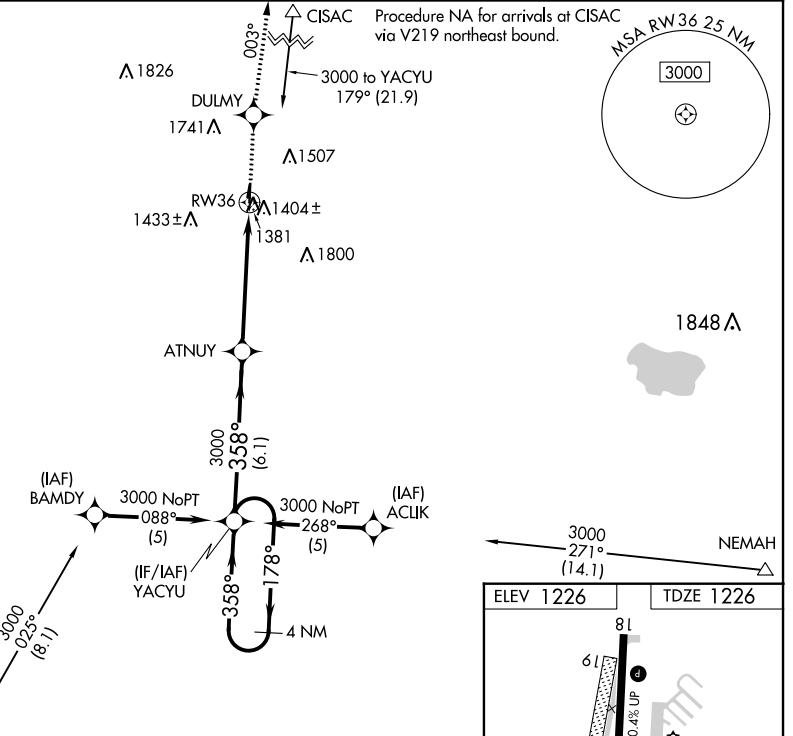
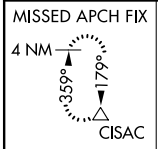
RNAV (GPS) Z RWY 36

CHEROKEE COUNTY RGNL (CKP)

⚠ Baro-VNAV NA when using Storm Lake altimeter setting.
 For uncompensated Baro-VNAV systems, LNAV/VNAV NA below -17°C (2°F) or above 54°C (130°F).
 DME/DME RNP-0.3 NA. Helicopter visibility reduction below ¾ SM NA.
 When local altimeter setting not received, use Storm Lake altimeter setting and increase all DA 74 feet and all visibility ¼ mile.

MISSED APPROACH: Climb to 3200 direct DULMY and on track 003° to CISAC and hold.

AWOS-3 119.225	MINNEAPOLIS CENTER 125.025 235.625	UNICOM 122.8 (CTAF)
--------------------------	--	-------------------------------



NC-3, 03 JAN 2019 to 31 JAN 2019

NC-3, 03 JAN 2019 to 31 JAN 2019