

APP CRS	Rwy Idg	<b>4299</b>
<b>180°</b>	TDZE	<b>293</b>
	Apt Elev	<b>293</b>

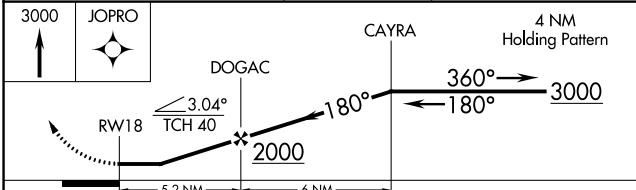
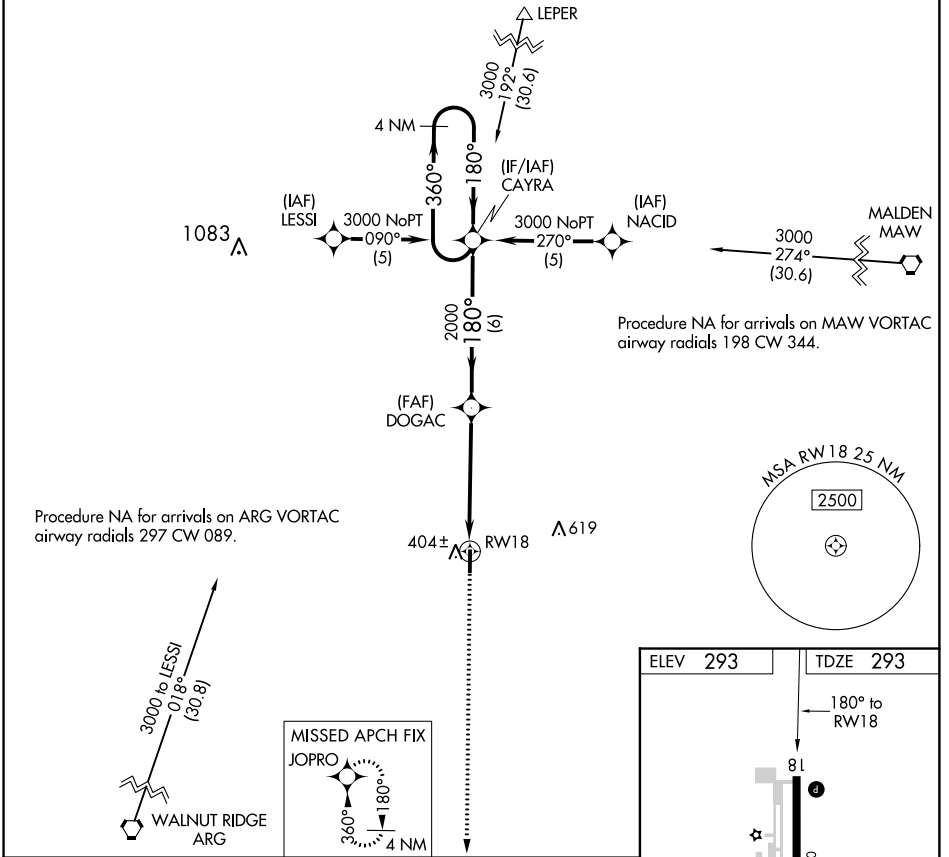
# RNAV (GPS) RWY 18

CORNING MUNI (4M9)

**▼** DME/DME RNP-0.3 NA. When local altimeter setting not received, use Walnut Ridge altimeter setting and increase all MDA 60 feet. Increase LNAV Cat C visibility 1/8 SM. Rwy 18 helicopter visibility reduction below 1 SM NA.

MISSED APPROACH: Climb to 3000 direct JOPRO and hold.

AWOS-3 <b>118.325</b>	MEMPHIS CENTER <b>120.075 289.4</b>	UNICOM <b>123.0 (CTAF) 0</b>
--------------------------	--	---------------------------------



ELEV 293	TDZE 293
----------	----------

180° to RWY 18

81

4299 X 60

36

REIL Rwy 18 and 36 0

MIRL Rwy 18-36 0

CATEGORY	A	B	C	D
LNAV MDA	720-1 427 (500-1)		720-1 1/4 427 (500-1 1/4)	NA
CIRCLING	760-1 467 (500-1)		760-1 1/2 467 (500-1 1/2)	NA

SC-1, 03 JAN 2019 to 31 JAN 2019

SC-1, 03 JAN 2019 to 31 JAN 2019