

| | | | |
|--|------------------------|-----------------------------|---|
| WAAS CH 99730 W21A | APP CRS 217° | Rwy Idg TDZE Apt Elev | 5152 1372 1372 |
|--|------------------------|-----------------------------|---|

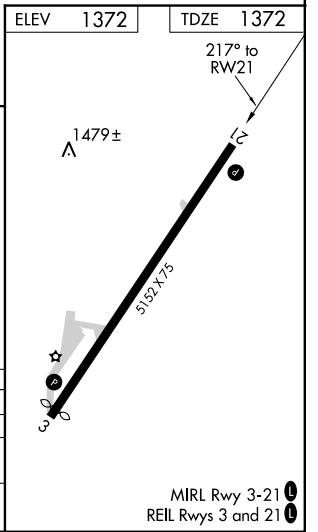
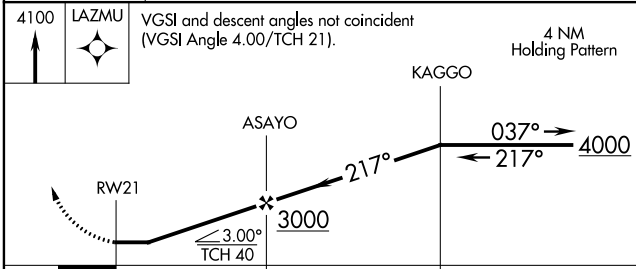
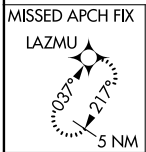
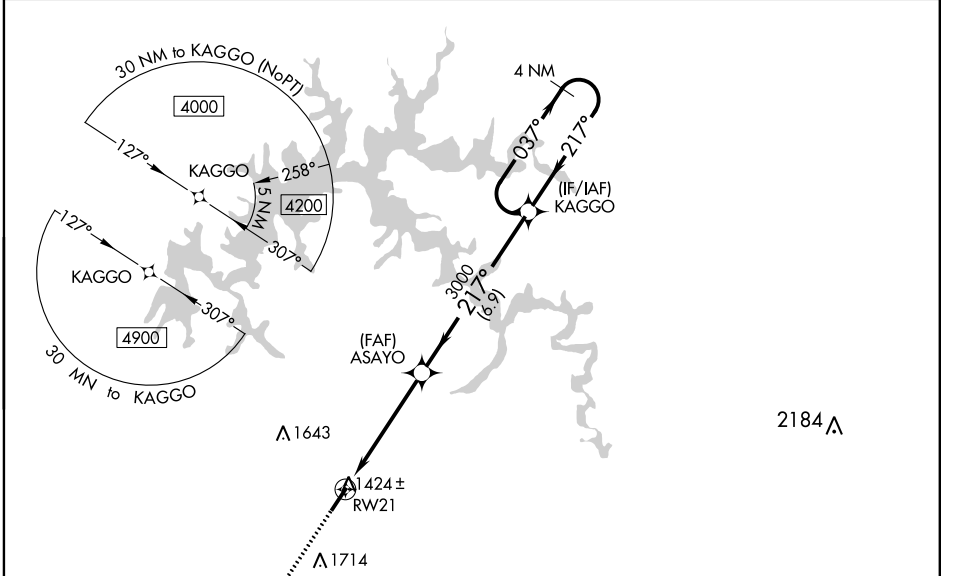
RNAV (GPS) RWY 21

LIVINGSTON MUNI (8A3)

NA DME/DME RNP-0.3 NA. Circling Rwy 3 NA at night. When local altimeter setting not received, use Crossville altimeter setting and increase all MDA 140 feet; increase LP and LNAV Cats C/D visibility $\frac{3}{8}$ mile; increase Circling Cat B visibility $\frac{1}{4}$ mile and Circling Cats C/D visibility $\frac{1}{2}$ mile. Rwy 21 helicopter visibility reduction below $\frac{3}{4}$ SM NA.

MISSED APPROACH: Climb to 4100 direct LAZMU and hold.

| | | |
|--------------------------|---|---------------------------------|
| AWOS-3 126.175 | INDIANAPOLIS CENTER 124.625 371.925 | UNICOM 122.8 (CTAF) 0 |
|--------------------------|---|---------------------------------|



| CATEGORY | A | B | C | D |
|----------|-----------------------|-----------------------|-----------------------|--|
| LP MDA | | 1680-1 | 308 (400-1) | |
| LNAV MDA | 1760-1 | 388 (400-1) | 1760-1 $\frac{1}{8}$ | 388 (400-1 $\frac{1}{8}$) |
| CIRCLING | 1860-1 488 (500-1) | 2080-1 708 (800-1) | 2080-2 708 (800-2) | 2080-2 $\frac{1}{4}$ 708 (800-2 $\frac{1}{4}$) |

SE-1, 03 JAN 2019 to 31 JAN 2019

SE-1, 03 JAN 2019 to 31 JAN 2019