

WAAS CH <b>87129</b> <b>W19A</b>	APP CRS <b>189°</b>	Rwy Idg TDZE Apt Elev	<b>4502</b> <b>898</b> <b>898</b>
--	------------------------	-----------------------------	---

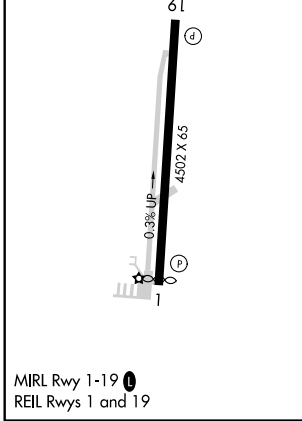
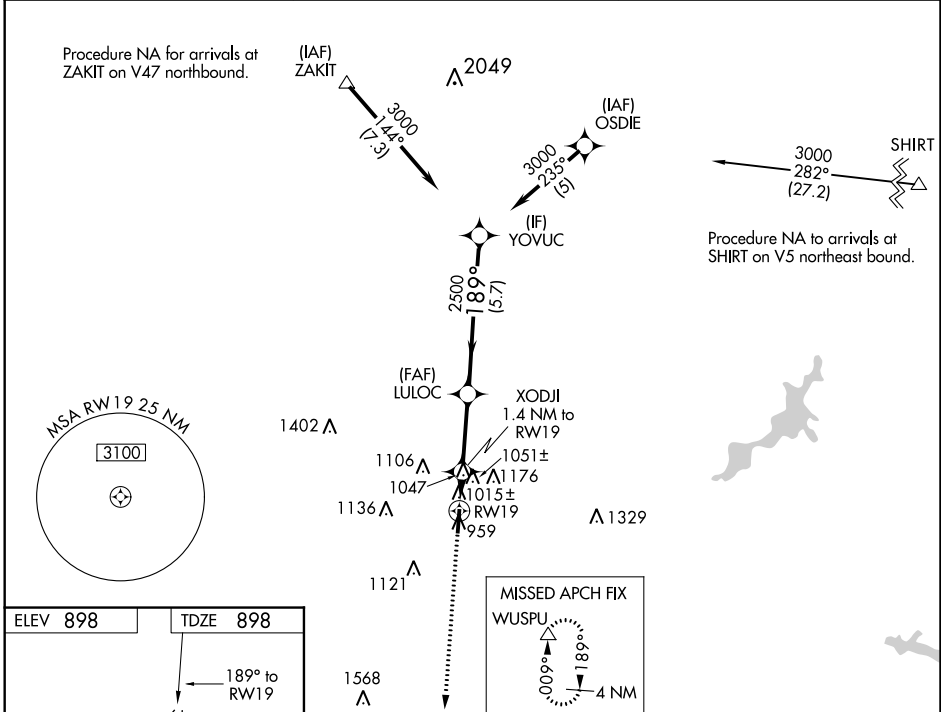
# RNAV (GPS) RWY 19

WARREN COUNTY/JOHN LANE FIELD (I68)

**NA** DME/DME RNP-0.3 NA. Helicopter visibility reduction below 1 SM NA. When local altimeter setting not received, use Dayton-Wright Brothers altimeter setting and increase all MDAs 40 feet; increase LP and LNAV Cat C and D visibility 1/8 mile and Circling Cat C visibility 1/4 mile. Night landing: Rwy 19 operational VGSi required, remain on or above VGSi glidepath until threshold.

**MISSED APPROACH:** Climb to 3000 direct WUSPU and hold.

AWOS-3 <b>120.55</b>	COLUMBUS APP CON <b>118.85 269.275</b>	UNICOM <b>123.075 (CTAF)</b>
-------------------------	---	---------------------------------



3000 WUSPU	YOVUC	3000		
3.50° TCH 42	LULOC	2500		
XODJI 1.4 NM to RWY 19	RWY 19	1460		
1.4 NM	2.8 NM	5.7 NM		
189°				
CATEGORY	A	B	C	D
LP MDA	1280-1	382 (400-1)	1280-1/8	382 (400-1/8)
LNAV MDA	1320-1	422 (500-1)	1320-1/4	422 (500-1/4)
<b>C</b> CIRCLING	1400-1 502 (600-1)	1480-1 582 (600-1)	1480-1/2 582 (600-1/2)	1480-2 582 (600-2)

EC-2, 03 JAN 2019 to 31 JAN 2019

EC-2, 03 JAN 2019 to 31 JAN 2019