

APCH CRS 054°	Rwy Idg TDZE Arprt Elev	N/A N/A 487
-------------------------	-------------------------------	--------------------------

AL-6422 (USA)

MUIR AAF (KMUI)

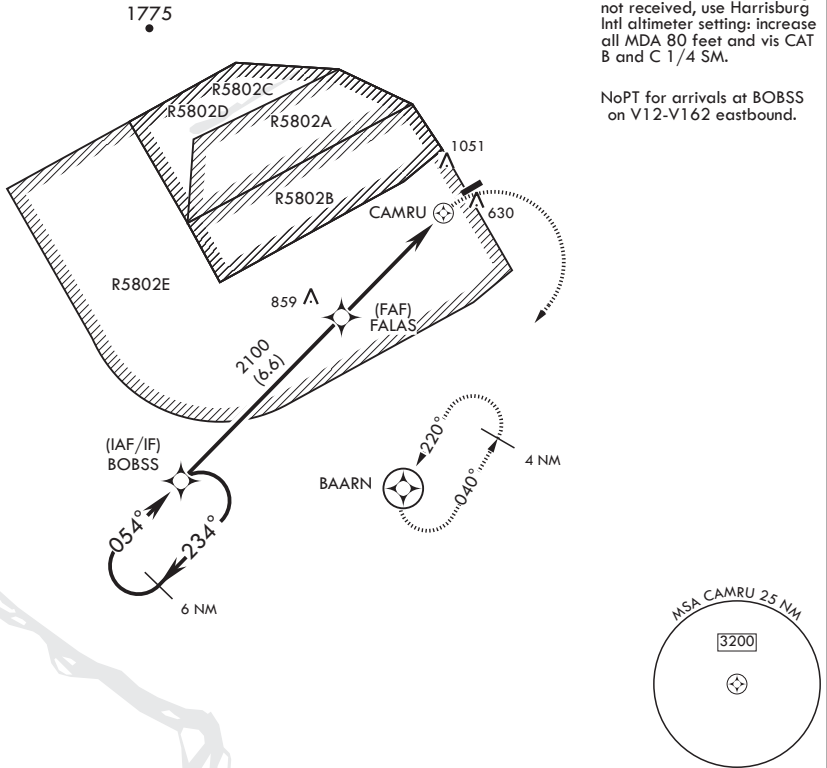
⚠ DME/DME RNP-0.3 NA. Circling N of Rwy 7-25 not authorized. Helicopter visibility reduction below 1 SM NA. MISSED APPROACH: Climbing right turn to 3100 direct BAARN and hold.

ASOS 124.175	HARRISBURG APP CON/DEP CON 118.25 269.45	TOWER 126.2 (CTAF) 0 290.5	GND CON 121.625 269.525
------------------------	--	--------------------------------------	-----------------------------------

NA When local weather not available.

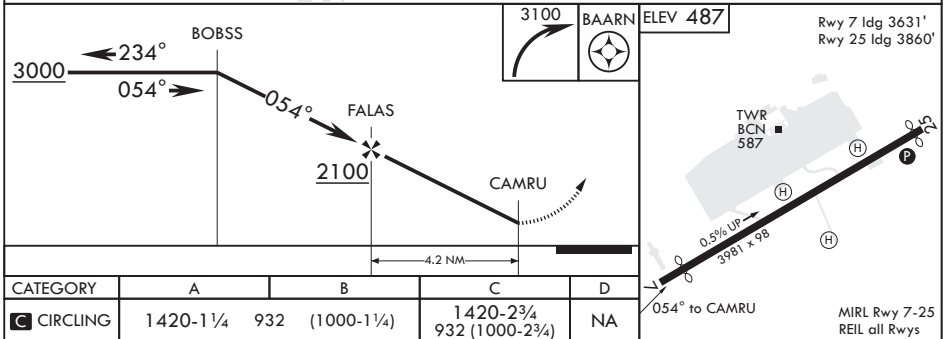
When local altimeter setting not received, use Harrisburg Intl altimeter setting: increase all MDA 80 feet and vis CAT B and C 1/4 SM.

NoPT for arrivals at BOBSS on V12-V162 eastbound.



NE-4, 03 JAN 2019 to 31 JAN 2019

NE-4, 03 JAN 2019 to 31 JAN 2019



CATEGORY	A	B	C	D
C CIRCLING	1420-1¼	932 (1000-1¼)	1420-2¾ 932 (1000-2¾)	NA