

RNAV (GPS) RWY 36

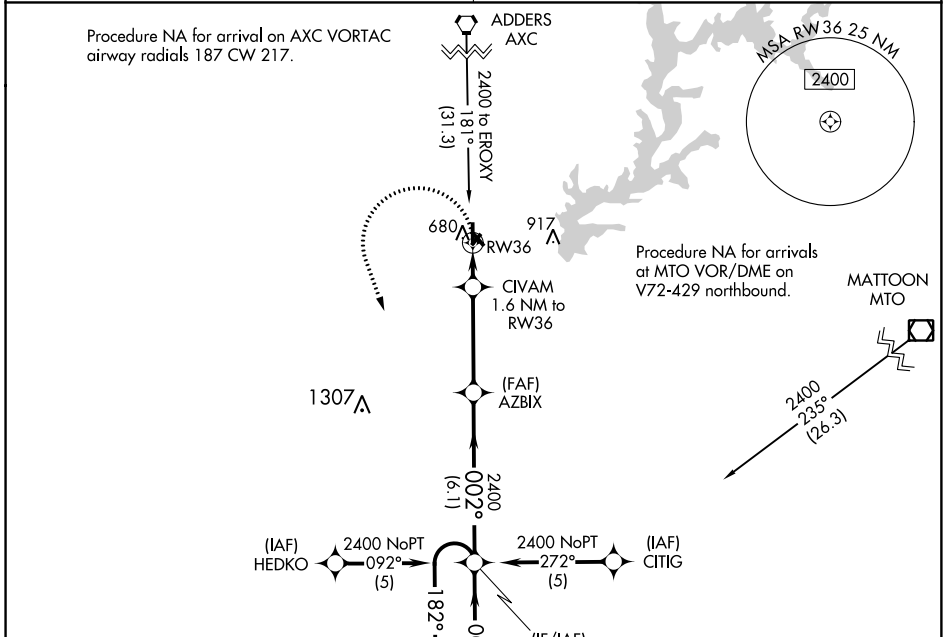
SHELBY COUNTY (2H \emptyset)

APP CRS	Rwy Idg	4098
002°	TDZE	618
	Apt Elev	618

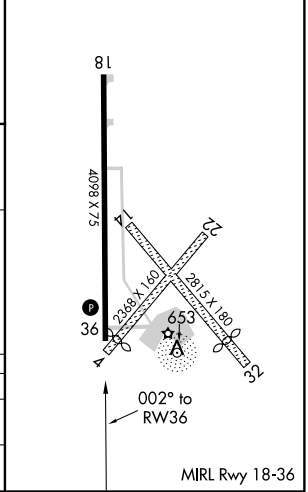
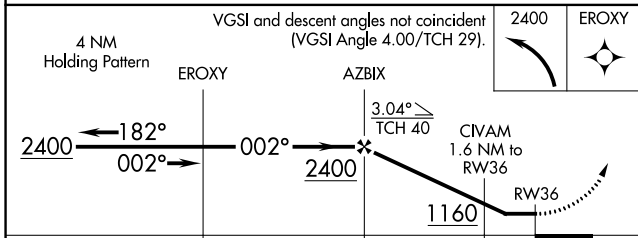
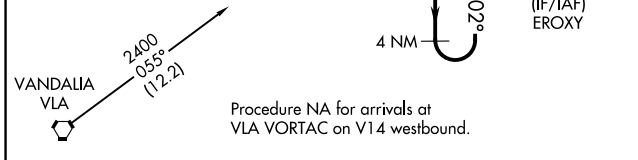
▼ DME/DME RNP-0.3 NA. Rwy 36 helicopter visibility reduction below 1 SM NA. Use Decatur altimeter setting, when not received use
▲ NA Mattoon/Charleston altimeter setting and increase all MDA 20 feet. Straight-in Rwy 36 NA at night, Circling Rwy 36 NA at night.

MISSED APPROACH: Climbing left turn to 2400 direct EROXY and hold.

KANSAS CITY CENTER 124.3 269.15	UNICOM 122.8 (CTAF)
---	-------------------------------



ELEV 618	TDZE 618
----------	----------



CATEGORY	A	B	C	D
LNVA MDA	1080-1	462 (500-1)	1080-1¼ 462 (500-1¼)	NA
CIRCLING	1200-1	582 (600-1)	1220-1¾ 602 (700-1¾)	NA

EC-3, 03 JAN 2019 to 31 JAN 2019

EC-3, 03 JAN 2019 to 31 JAN 2019