

NDB-A

SHELBY COUNTY (2H(0))

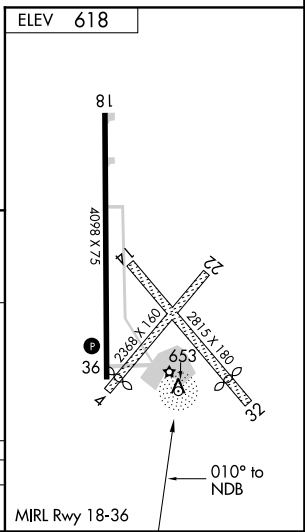
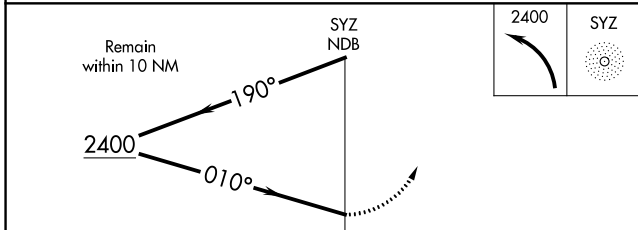
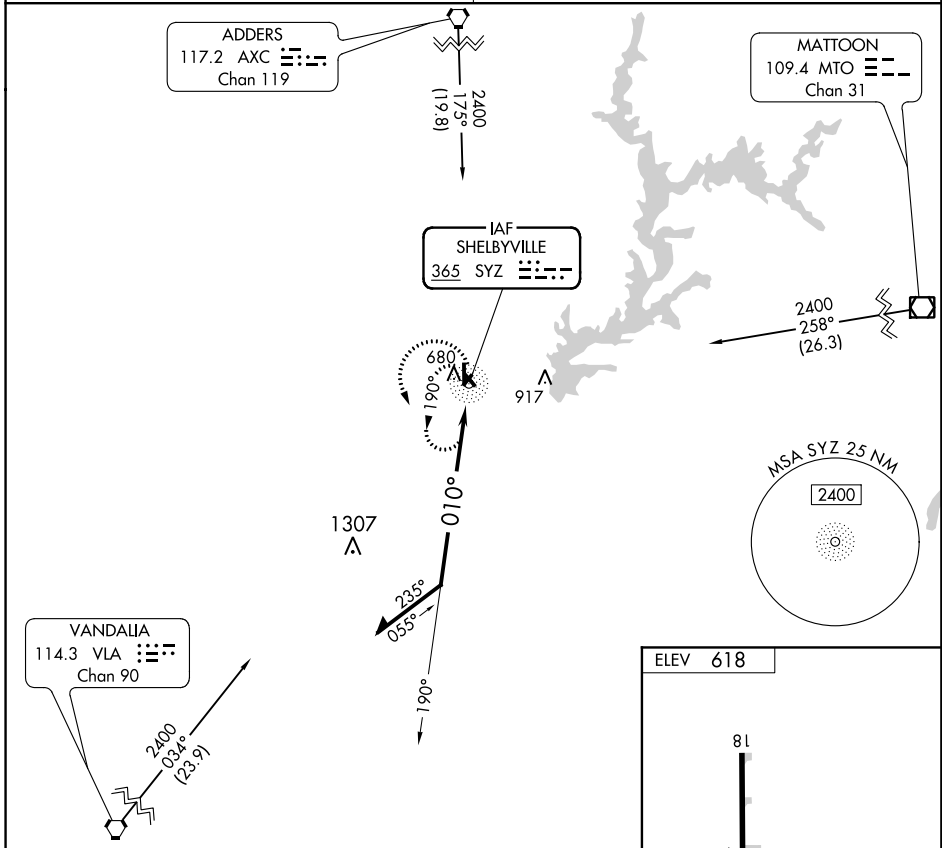
NDB SYZ	APP CRS	Rwy Idg	N/A
365	010°	TDZE	N/A
		Apt Elev	618

Use Decatur altimeter setting, when not received use Mattoon/Charleston altimeter setting and increase all MDA 20 feet.
 NA Circling Rwy 36 NA at night.

MISSED APPROACH: Climbing left turn to 2400 in SYZ NDB holding pattern.

KANSAS CITY CENTER **124.3 269.15**

UNICOM **122.8 (CTAF)**



CATEGORY	A	B	C	D
CIRCLING	1300-1	682 (700-1)	1300-2 682 (700-2)	NA

EC-3, 03 JAN 2019 to 31 JAN 2019

EC-3, 03 JAN 2019 to 31 JAN 2019