

WAAS CH 65999 W05A	APP CRS 053°	Rwy Idg TDZE 700 Apt Elev 700	6007
--	------------------------	---	-------------

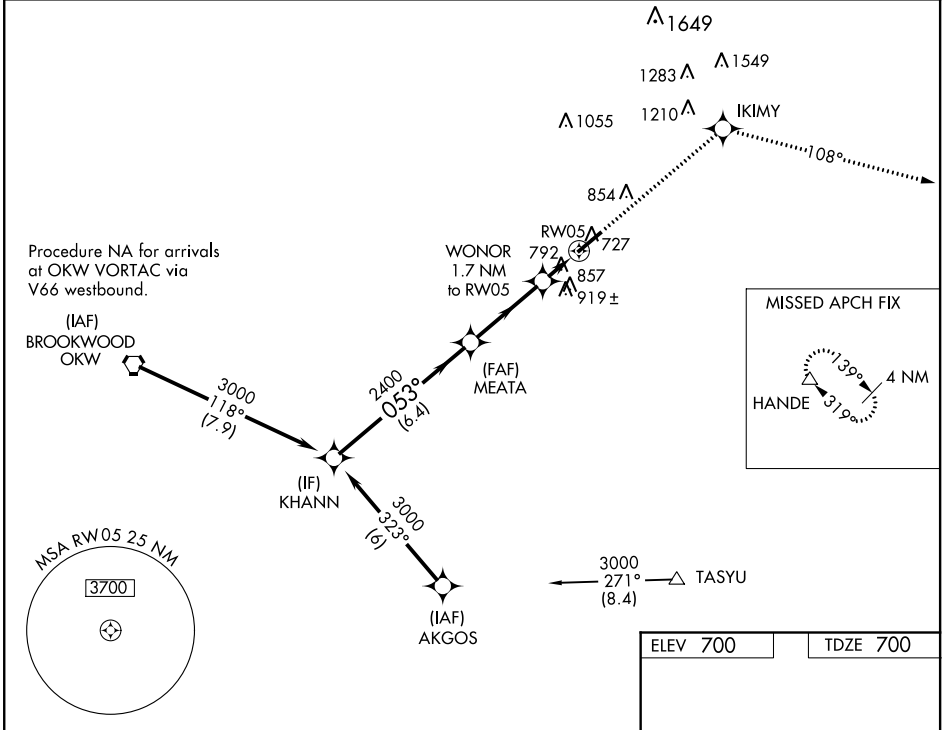
RNAV (GPS) RWY 5

BESSEMER (EKY)

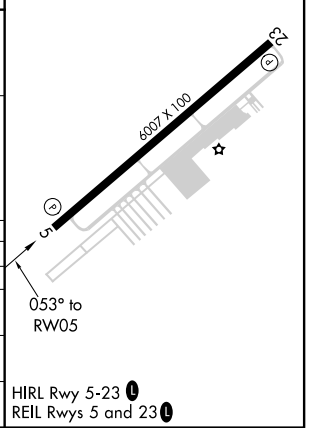
NA Baro-VNAV NA when using Alabaster altimeter setting. For uncompensated Baro-VNAV systems, LNAV/VNAV NA below -16°C (4°F) or above 54°C (130°F). DME/DME RNP-0.3 NA. When local altimeter setting not received, use Alabaster altimeter setting and increase all DA 41 feet and all MDA 60 feet. Increase LNAV Cat C and D visibility ¼ mile.

MISSED APPROACH: Climb to 4000 direct IKIMY and on track 108° to HANDE and hold.

AWOS-3PT 118.825	BIRMINGHAM APP CON 124.9 351.85	CLNC DEL 123.75	UNICOM 123.0 (CTAF) 0
----------------------------	---	---------------------------	---------------------------------



Procedure Turn NA	KHANN		4000	IKIMY	tr 108°	HANDE
	3000		2400	2400	1300	2400
GP 3.00° TCH 60	053°		* LNAV only		* LNAV only	
	6.4 NM		3.4 NM		1.7 NM	
CATEGORY	A	B	C	D		
LPV DA	900-3/4		200 (200-3/4)			
LNAV/VNAV DA	1244-2		544 (600-2)			
LNAV MDA	1160-1	460 (500-1)	1160-1 1/4 460 (500-1 1/4)	1160-1 1/2 460 (500-1 1/2)		
CIRCLING	1200-1	500 (500-1)	1220-1 1/2 520 (600-1 1/2)	1260-2 560 (600-2)		



SE-4, 03 JAN 2019 to 31 JAN 2019

SE-4, 03 JAN 2019 to 31 JAN 2019