

WAAS CH <b>90541</b> <b>W20A</b>	APP CRS <b>200°</b>	Rwy Idg TDZE Apt Elev	<b>5000</b> <b>995</b> <b>996</b>
--	------------------------	-----------------------------	---

# RNAV (GPS) RWY 20

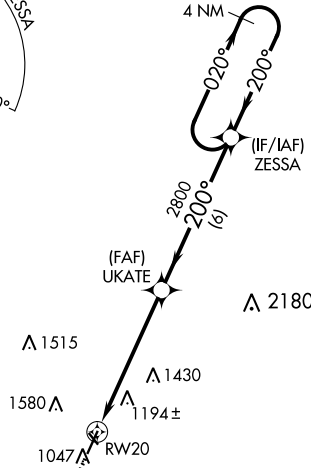
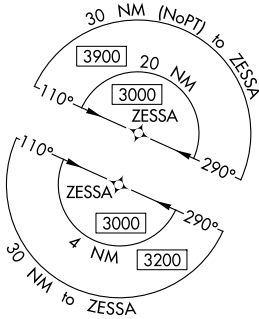
SCHENCK FIELD (ICL)

RNP APCH.

- ▼ For uncompensated Baro-VNAV systems, LNAV/VNAV NA below -1.6°C (4°F) or above 54°C (130°F).
- ▲ Circling NA west of Rwy 2-20. Circling NA to Rwys 13 and 31.
- Rwy 20 helicopter visibility reduction below ¾ SM NA.

MISSED APPROACH:  
Climb to 3000 direct  
JOGOL and hold.

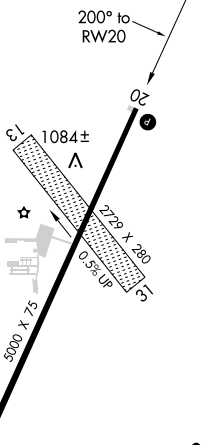
AWOS-3 <b>132.025</b>	MINNEAPOLIS CENTER <b>119.6 290.4</b>	UNICOM <b>122.8 (CTAF)</b>
--------------------------	--	-------------------------------



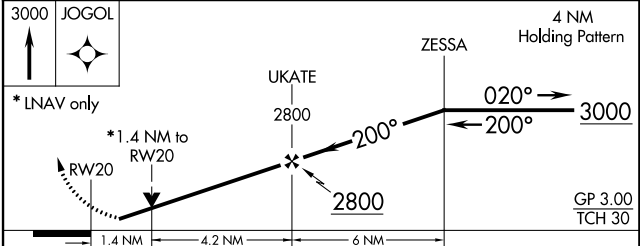
MISSED APCH FIX



ELEV 996	TDZE 995
----------	----------



REIL Rwy 20  
MIRL Rwy 2-20



CATEGORY	A	B	C	D
LPV DA	1261-1		266 (300-1)	
LNAV/VNAV DA	1489-1 <sup>3</sup> / <sub>8</sub>		494 (500-1 <sup>3</sup> / <sub>8</sub> )	
LNAV MDA	1460-1	465 (500-1)	1460-1 <sup>3</sup> / <sub>8</sub>	465 (500-1 <sup>3</sup> / <sub>8</sub> )
<input checked="" type="checkbox"/> CIRCLING	1500-1	504 (600-1)	1780-2 <sup>1</sup> / <sub>4</sub> 784 (800-2 <sup>1</sup> / <sub>4</sub> )	1780-2 <sup>1</sup> / <sub>2</sub> 784 (800-2 <sup>1</sup> / <sub>2</sub> )

NC-3, 03 JAN 2019 to 31 JAN 2019

NC-3, 03 JAN 2019 to 31 JAN 2019