

VORTAC PXR 115.6 Chan 103	APP CRS 330°	Rwy Idg TDZE Apt Elev N/A N/A 1177
---	------------------------	--

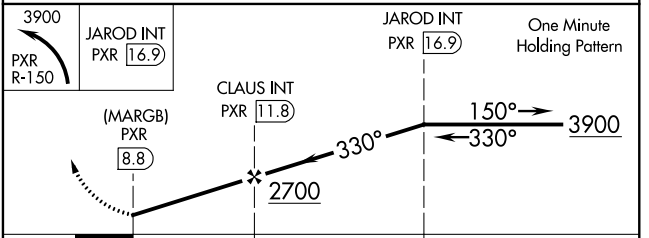
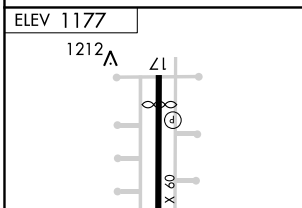
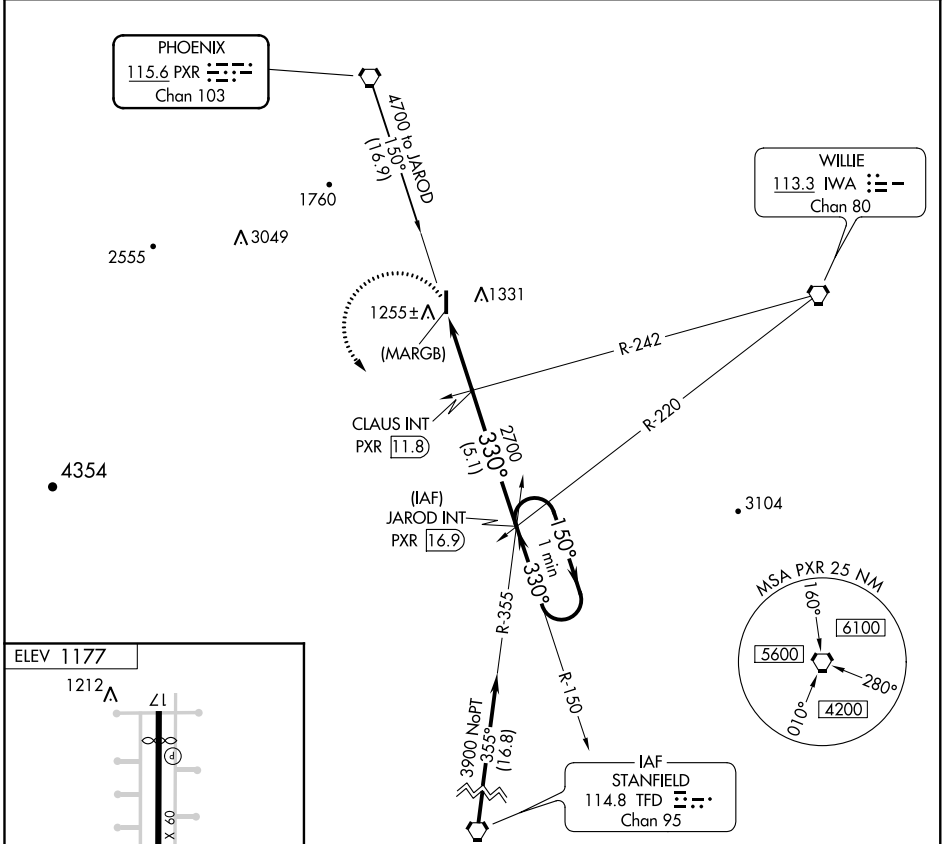
VOR or GPS-A
STELLAR AIRPARK (P19)

NA Use Phoenix Sky Harbor Intl altimeter setting. Procedure not authorized at night.

MISSED APPROACH: Climbing left turn to 3900 via PXR R-150 to JAROD Int/PXR 16.9 DME and hold.

PHOENIX APP CON **123.7 363.0**

UNICOM **122.975(CTAF)**



FAF to MAP 3 NM		CATEGORY	A	B	C	D
Knots	60 90 120 150 180	CIRCLING	1640-1 463 (500-1)	1640-1 463 (500-1)	1640-1½ 463 (500-1½)	NA
Min:Sec	3:00 2:00 1:30 1:12 1:00					

SW-4, 03 JAN 2019 to 31 JAN 2019

SW-4, 03 JAN 2019 to 31 JAN 2019