

WAAS CH <b>78107</b> <b>W24A</b>	APP CRS <b>239°</b>	Rwy Idg TDZE Apt Elev	<b>5001</b> <b>818</b> <b>819</b>
--	------------------------	-----------------------------	---

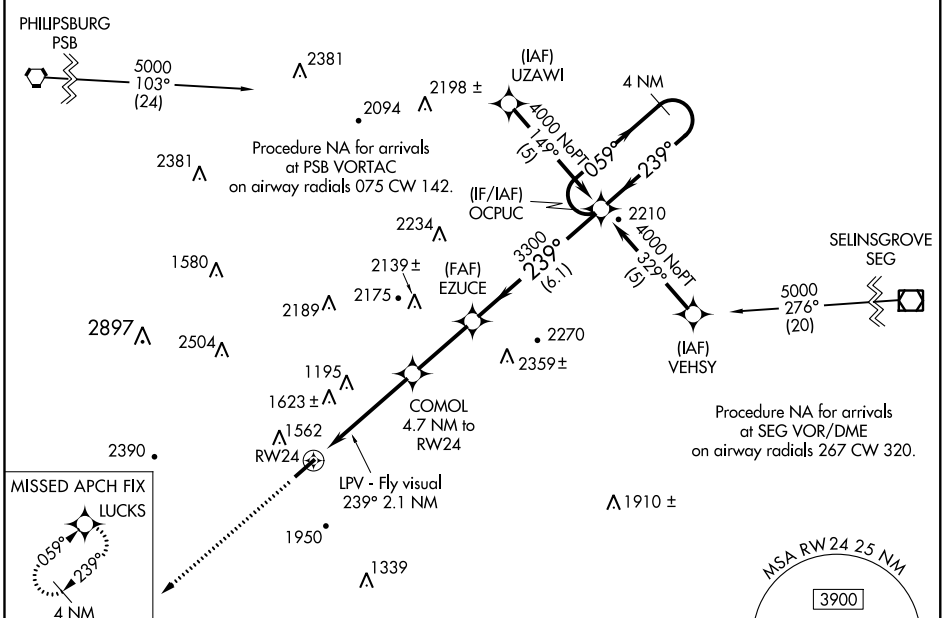
# RNAV (GPS) RWY 24

MIFFLIN COUNTY (R.V.L.)

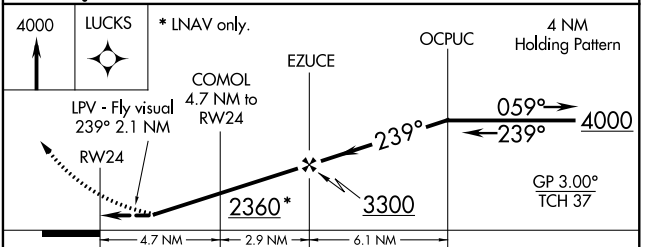
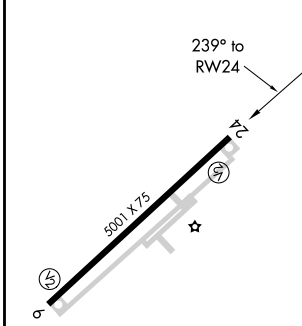
**NA** Circling NA northwest of Rwy 6-24. When local altimeter setting not received, use State College altimeter setting and increase LPV DA to 1602, increase all MDAAs 100 feet; increase LPV visibility to 2 3/4 all Cats. DME/DME RNP-0.3 NA. Rwy 24 helicopter visibility reduction below 3/4 SM NA.

**MISSED APPROACH:** Climb to 4000 direct LUCKS and hold.

AWOS-3PT <b>123.85</b>	NEW YORK CENTER <b>134.8 338.3</b>	UNICOM <b>122.7 (CTAF)</b>
---------------------------	---------------------------------------	-------------------------------



ELEV <b>819</b>	TDZE <b>818</b>
-----------------	-----------------



CATEGORY	A	B	C	D
LPV DA	1509-2 691 (700-2)			1509-2 1/4 691 (700-2 1/4)
LNAV MDA	2220-1 1/4 1402 (1500-1 1/4)	2220-1 1/2 1402 (1500-1 1/2)	2220-3 1402 (1500-3)	
CIRCLING	2220-1 1/4 1401 (1500-1 1/4)	2220-1 1/2 1401 (1500-1 1/2)	2220-3 1401 (1500-3)	2360-3 1541 (1600-3)

REIL Rws 6 and 24 **1**  
MIRL Rwy 6-24 **1**

NE-4, 03 JAN 2019 to 31 JAN 2019

NE-4, 03 JAN 2019 to 31 JAN 2019