

LOC I-RVL	APP CRS	Rwy Idg	5001
109.3	059°	TDZE	819
		Apt Elev	819

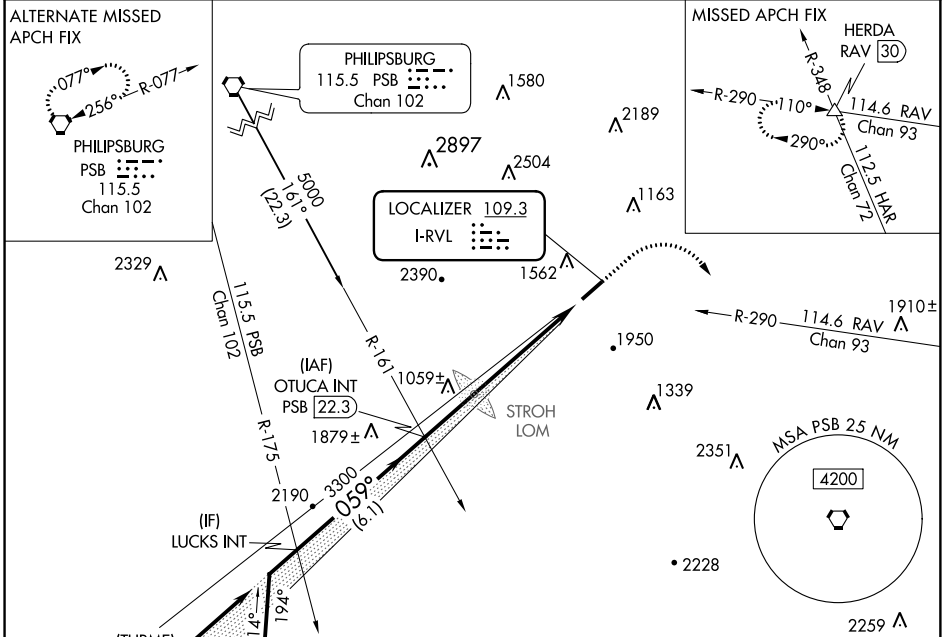
LOC RWY 6

MIFFLIN COUNTY (R.V.L)

NA Circling NA northwest of Rwy 6-24. Helicopter visibility reduction below ¼ SM NA. When local altimeter setting not received, use State College altimeter setting and increase all MDA 100 feet.

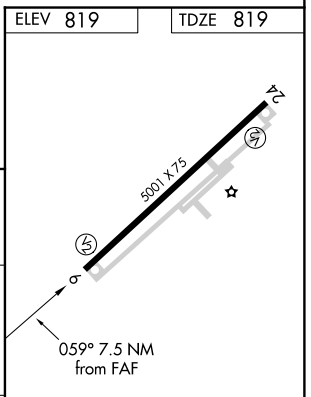
MISSED APPROACH: Climb to 3000 then climbing right turn to 4000 via heading 147° and RAV VORTAC R-290 to HERDA INT/RAV 30 DME and hold.

AWOS-3PT 123.85	NEW YORK CENTER 134.8 338.3	UNICOM 122.7 (CTAF)
---------------------------	---------------------------------------	-------------------------------



NE-4, 03 JAN 2019 to 31 JAN 2019

NE-4, 03 JAN 2019 to 31 JAN 2019



Remain within 10 NM	OTUCA INT PSB 22.3	3000	4000	RAV R-290	HERDA
		3300			

CATEGORY	A	B	C	D
S-6	1840-1¼ 1021 (1100-1¼)	1840-1½ 1021 (1100-1½)	1840-3 1021 (1100-3)	1021 (1100-3)
CIRCLING	1840-1¼ 1021 (1100-1¼)	1840-1½ 1021 (1100-1½)	1840-3 1021 (1100-3)	2360-3 1541 (1600-3)

REIL Rwys 6 and 24	
MIRL Rwy 6-24	
FAF to MAP 7.5 NM	
Knots	60 90 120 150 180
Min:Sec	7:30 5:00 3:45 3:00 2:30