

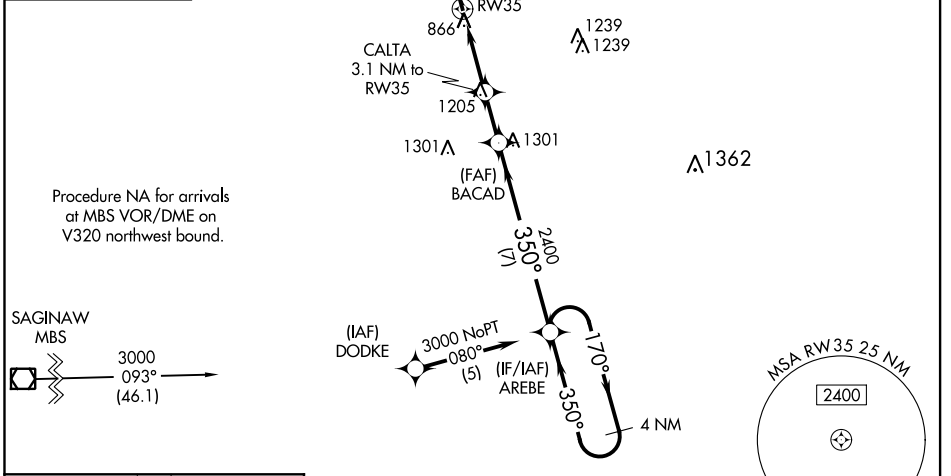
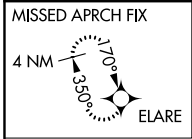
WAAS CH 62805 W35A	APP CRS 350°	Rwy Idg 5009 TDZE 756 Apt Elev 763
--	------------------------	---

RNAV (GPS) RWY 35
HURON COUNTY MEMORIAL (BAX)

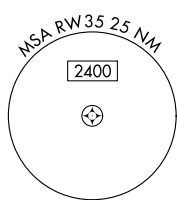
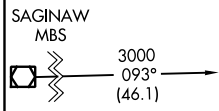
⚠ For uncompensated Baro-VNAV systems, LNAV/VNAV NA below -16°C (4°F) or above 54°C (130°F). DME/DME RNP-0.3 NA. When local altimeter setting not received, use MBS Intl altimeter setting and increase all DA 129 feet and all MDA 140 feet. Increase LPV all Cats and LNAV Cat C visibility 3/8 mile; increase Circling Cat C visibility 1/2 mile. Rwy 35 helicopter visibility reduction below 3/4 SM NA. VDP and Baro/VNAV NA when using MBS Intl altimeter setting.

MISSED APPROACH: Climb to 3000 direct ELARE and hold.

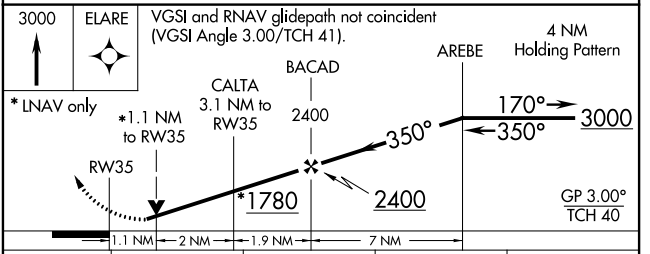
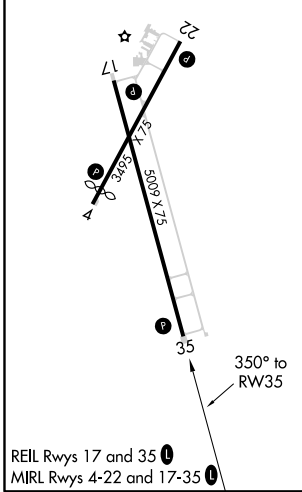
AWOS-3 118.6	CLEVELAND CENTER 127.7 307.8	UNICOM 123,075 (CTAF) 0
------------------------	--	--



Procedure NA for arrivals at MBS VOR/DME on V320 northwest bound.



ELEV 763	TDZE 756
-----------------	-----------------



CATEGORY	A	B	C	D
LPV DA	1113-1 1/4	357 (400-1 1/4)		NA
LNAV/VNAV DA	1154-1 1/2	398 (400-1 1/2)		NA
LNAV MDA	1520-1 764 (800-1)	1520-1 1/4 764 (800-1 1/4)	1520-2 1/2 764 (800-2 1/2)	NA
CIRCLING	1520-1 757 (800-1)	1520-1 1/4 757 (800-1 1/4)	1520-2 1/2 757 (800-2 1/2)	NA

EC-1, 03 JAN 2019 to 31 JAN 2019

EC-1, 03 JAN 2019 to 31 JAN 2019