

APP CRS	Rwy Idg	4304
116°	TDZE	869
	Apt Elev	869

RNAV (GPS) RWY 11

LUCE COUNTY (ERY)

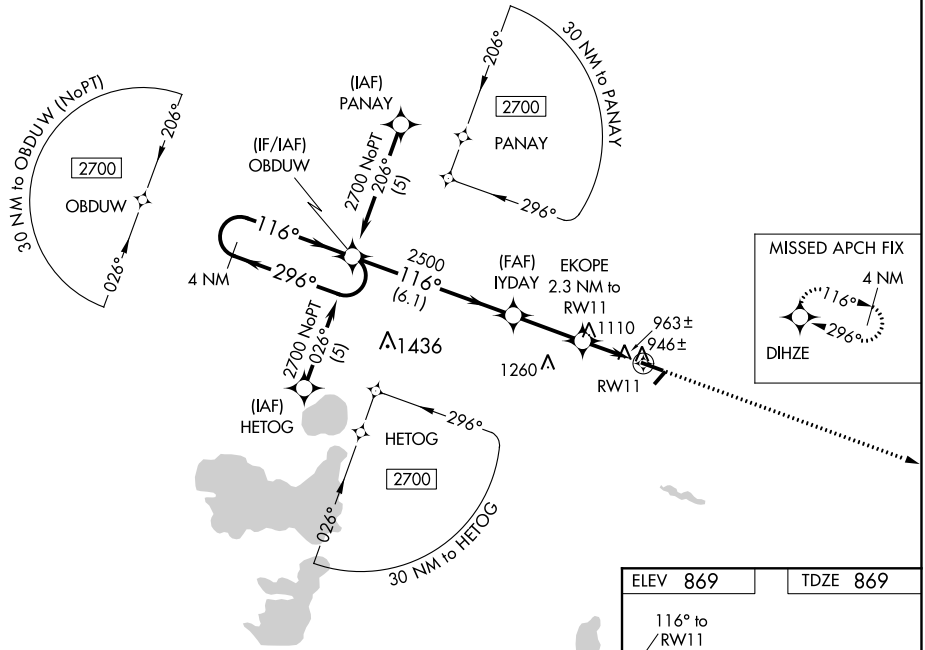
▼ For uncompensated Baro-VNAV systems, LNAV/VNAV NA below -16°C (4°F) or above 47°C (116°F). DME/DME RNP-0.3 NA. Visibility reduction by helicopters NA. When local altimeter setting not received, use Chippewa Co Intl altimeter setting and increase DA 105 feet and all MDA 120 feet, increase LNAV/VNAV visibility ¼ mile all Cats, LNAV Cats C and D ½ mile, and Circling Cats C and D ¼ mile. Baro-VNAV NA when using Chippewa Co Intl altimeter setting.

MISSED APPROACH:
Climb to 2700 direct
DIHZE and hold.

AWOS-3
119.525

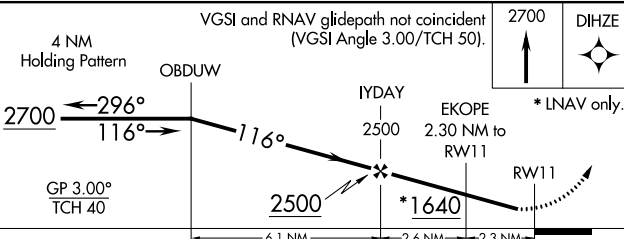
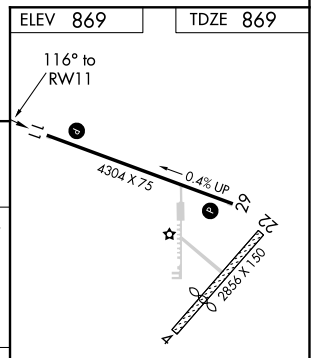
GREEN BAY RADIO
122.4

UNICOM
122.8 (CTAF) ①



EC-1, 03 JAN 2019 to 31 JAN 2019

EC-1, 03 JAN 2019 to 31 JAN 2019



CATEGORY	A	B	C	D
LNAV/DA/VNAV	1259-1½		390 (400-1½)	
LNAV MDA	1360-1	491 (500-1)	1360-1¼ 491 (500-1¼)	1360-1½ 491 (500-1½)
CIRCLING	1360-1	491 (500-1)	1360-1½ 491 (500-1½)	1420-2 551 (600-2)

MIRL Rwy 11-29 ①
REIL Rwy 11 and 29 ①