

| | | |
|--|------------------------|---|
| WAAS CH 61303 W27A | APP CRS 272° | Rwy Idg 3395 TDZE 617 Apt Elev 620 |
|--|------------------------|---|

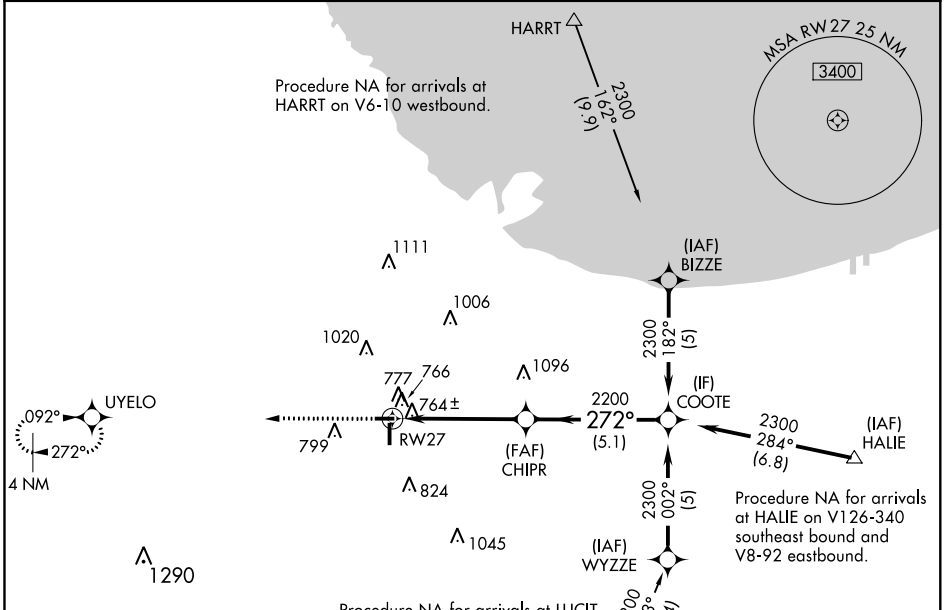
RNAV (GPS) RWY 27

LANSING MUNI (IGQ)

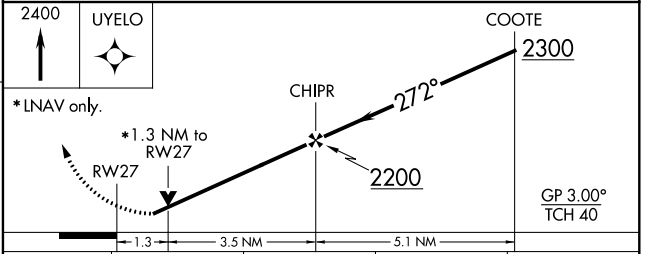
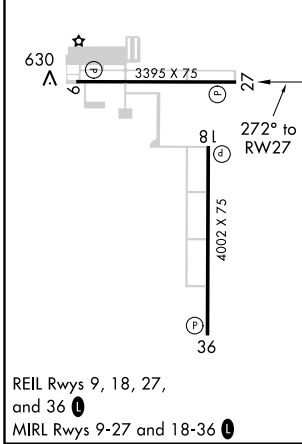
▼ **▲** Baro-VNAV NA when using Chicago Midway Intl altimeter setting. For uncompensated Baro-VNAV systems, LNAV/VNAV NA below -16°C (4°F) or above 54°C (130°F). Rwy 27 helicopter visibility reduction below ¾ SM NA. DME/DME RNP-0.3 NA. VDP NA when using Chicago Midway Intl altimeter setting. When local altimeter setting not received, use Chicago Midway Intl altimeter setting: increase LPV DA to 1058 and LNAV/VNAV DA to 1114 and all MDA 60 feet. Circling Rwy 9 NA at night.

MISSED APPROACH:
Climb to 2400 direct UYELO and hold.

| | | |
|--------------------------|---------------------------------------|---------------------------------|
| AWOS-3 119.275 | CHICAGO APP CON 128.2 285.6 | UNICOM 122.7 (CTAF) 0 |
|--------------------------|---------------------------------------|---------------------------------|



| | |
|----------|----------|
| ELEV 620 | TDZE 617 |
|----------|----------|



| CATEGORY | A | B | C | D |
|--------------|---------|--------------|---|----|
| LPV DA | 1016-1½ | 399 (400-1½) | | NA |
| LNAV/VNAV DA | 1072-1¾ | 455 (500-1¾) | | NA |
| LNAV MDA | 1080-1 | 463 (500-1) | | NA |
| CIRCLING | 1140-1 | 520 (600-1) | | NA |

CHICAGO, ILLINOIS
Orig-A 30MAR17

41° 32'N-87° 32'W

RNAV (GPS) RWY 27

EC-3, 03 JAN 2019 to 31 JAN 2019

EC-3, 03 JAN 2019 to 31 JAN 2019