

| | | |
|--|------------------------|---|
| WAAS CH 93835 W22A | APP CRS 220° | Rwy Idg 5002 TDZE 182 Apt Elev 182 |
|--|------------------------|---|

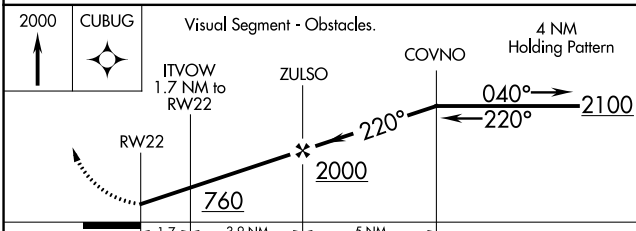
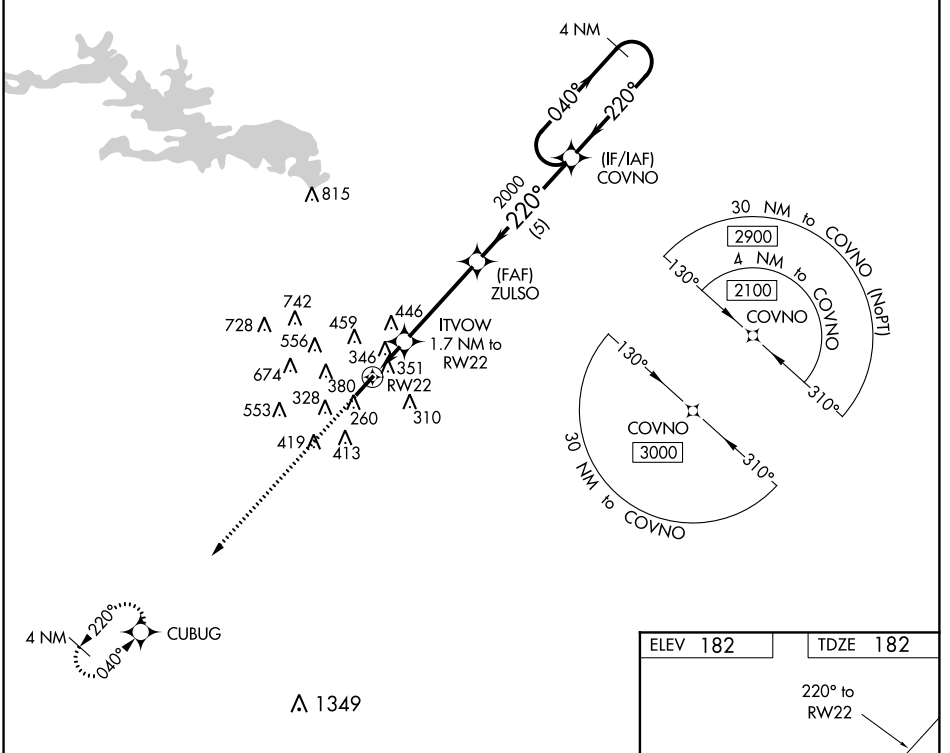
RNAV (GPS) RWY 22

DEXTER B. FLORENCE MEMORIAL FIELD (ADF)

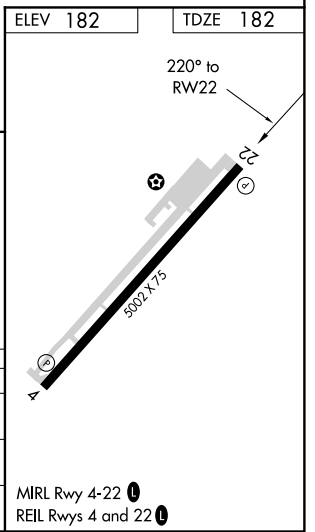
▼ DME/DME RNP-0.3 NA. When local altimeter setting not received, use Hot Springs altimeter setting and increase all MDAs 120 feet, and increase LP and LNAV Cat C visibility $\frac{3}{8}$ SM and Circling Cat C visibility $\frac{1}{2}$ mile. Night landing: Rwy 22 NA. Helicopter visibility reduction below 1 SM NA.

▲ NA MISSED APPROACH: Climb to 2000 direct CUBUG and hold.

| | | |
|----------------------------|---|---------------------------------|
| AWOS-3PT 118.175 | MEMPHIS CENTER 128.475 377.15 | UNICOM 122.7 (CTAF) 0 |
|----------------------------|---|---------------------------------|



| CATEGORY | A | B | C | D |
|-------------------|----------------------|----------------------|--|----|
| LP MDA | 600-1 | 418 (500-1) | 600-1 $\frac{3}{8}$ 418 (500-1 $\frac{3}{8}$) | NA |
| LNAV MDA | 680-1 | 498 (500-1) | 680-1 $\frac{3}{8}$ 498 (500-1 $\frac{3}{8}$) | NA |
| C CIRCLING | 760-1 578 (600-1) | 800-1 618 (700-1) | 1040-2 $\frac{1}{2}$ 858 (900-2 $\frac{1}{2}$) | NA |



SC-1, 03 JAN 2019 to 31 JAN 2019

SC-1, 03 JAN 2019 to 31 JAN 2019