

APP CRS	Rwy Idg	3180
269°	TDZE	9
	Apt Elev	9

RNAV (GPS) RWY 28R

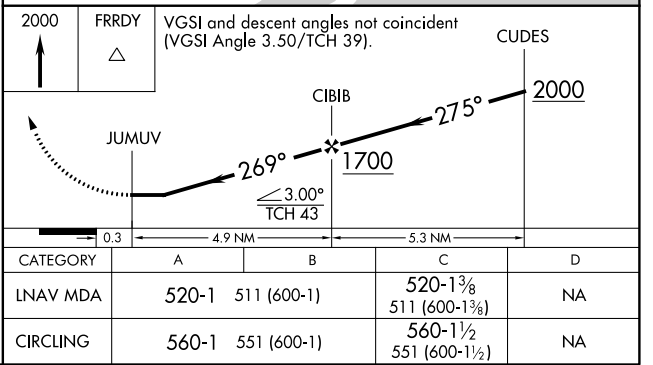
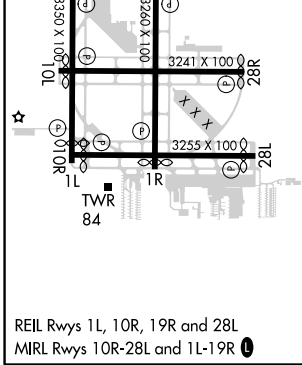
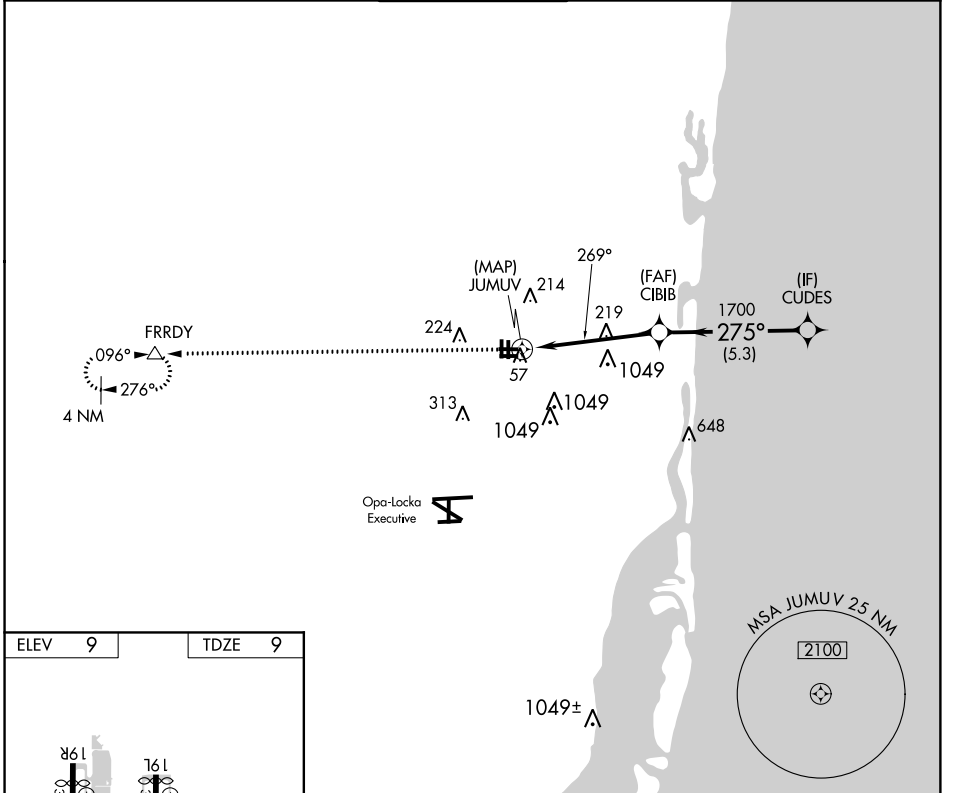
NORTH PERRY (HWO)

RNP APCH. RADAR required for procedure entry.

▼ Rwy 28 helicopter visibility reduction below 3/4 SM NA. Straight-in minimums NA at night. Circling Rwy 1R, 10L, 19L, 28R NA at night.

MISSED APPROACH: Climb to 2000 direct FRRDY and hold.

ATIS 135.475	MIAMI APP CON 128.6 306.975	NORTH PERRY TOWER* 132.1 (CTAF) 0 254.3	GND CON 120.45 254.3	UNICOM 122.95
------------------------	---------------------------------------	--	--------------------------------	-------------------------



SE-3, 03 JAN 2019 to 31 JAN 2019

SE-3, 03 JAN 2019 to 31 JAN 2019