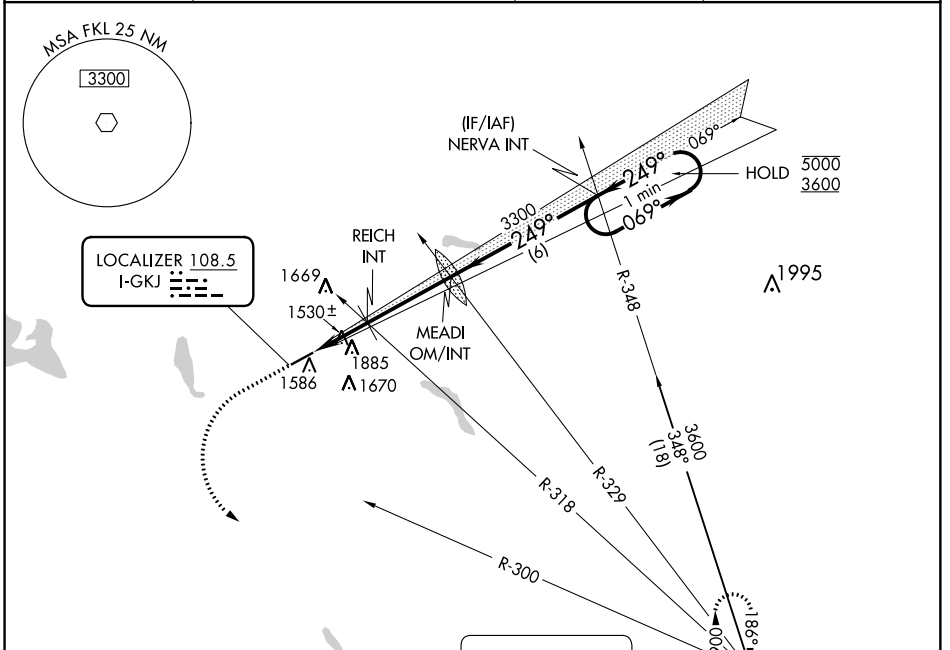


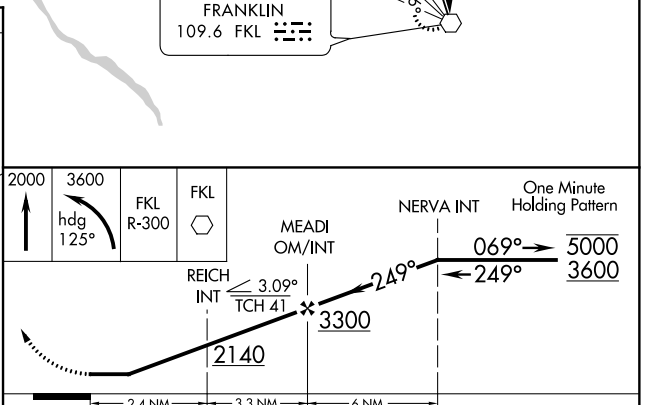
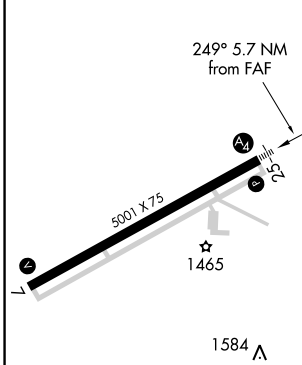
LOC I-GKJ <b>108.5</b>	APP CRS <b>249°</b>	Rwy Idg TDZE Apt Elev	<b>5001</b> <b>1399</b> <b>1399</b>
---------------------------	------------------------	-----------------------------	---

**LOC RWY 25**  
PORT MEADVILLE (GKJ)

RADAR required.		MALS	MISSED APPROACH: Climb to 2000 then climbing left turn to 3600 on heading 125° and FKL VOR R-300 to FKL VOR and hold.
Inop table does not apply. Rwy 25 helicopter visibility reduction below 3/4 SM NA.			
ASOS <b>121.425</b>	YOUNGSTOWN APP CON * <b>133.95 322.3</b>	CLNC DEL <b>124.95</b>	UNICOM <b>123.0 (CTAF)</b>



ELEV 1399	TDZE 1399
-----------	-----------



MIRL Rwy 7-25					
FAF to MAP 5.7 NM					
Knots	60	90	120	150	180
Min:Sec	5:42	3:48	2:51	2:17	1:54
CATEGORY	A	B	C	D	
S-LOC 25	1780-1	381 (400-1)	1780-1 7/8	381 (400-1 7/8)	
CIRCLING	1900-1 501 (600-1)	2240-1 1/4 841 (900-1 1/4)	2240-2 1/2 841 (900-2 1/2)	2240-2 3/4 841 (900-2 3/4)	

NE-4, 03 JAN 2019 to 31 JAN 2019

NE-4, 03 JAN 2019 to 31 JAN 2019