

LURIC SIX DEPARTURE (RNAV)

ATIS
 128.375
 CLNC DEL
 119.45
 GND CON
 121.8 239.0
 HOOKS TOWER ★
 127.4 354.1 (EAST)
 118.4 (CTAF) 354.1 (WEST)
 HOUSTON DEP CON
 119.7 281.4

TOP ALTITUDE: ASSIGNED BY ATC

NOTE: RADAR required.
 NOTE: DME/DME/IRU or GPS required.
 NOTE: RNAV 1.

TAKEOFF MINIMUMS

Rwys 17L, 35R: NA-Environmental.
 Waterways 17, 35: NA-Air Traffic.
 Rwys 17R, 35L: Standard with minimum
 climb of 500' per NM to 660.

DEPARTURE ROUTE DESCRIPTION

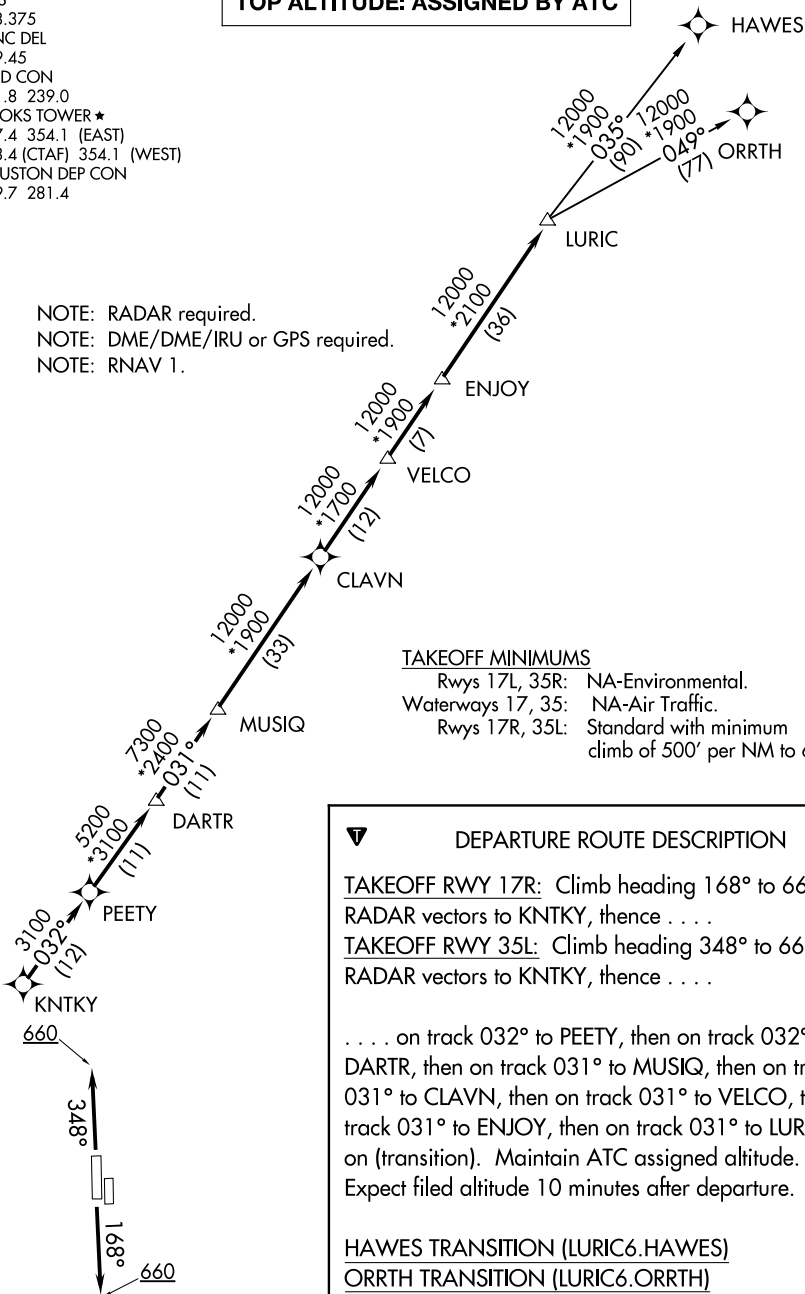
TAKEOFF RWY 17R: Climb heading 168° to 660 for
 RADAR vectors to KNTKY, thence

TAKEOFF RWY 35L: Climb heading 348° to 660 for
 RADAR vectors to KNTKY, thence

. . . . on track 032° to PEETY, then on track 032° to
 DARTR, then on track 031° to MUSIQ, then on track
 031° to CLAVN, then on track 031° to VELCO, then on
 track 031° to ENJOY, then on track 031° to LURIC, then
 on (transition). Maintain ATC assigned altitude.
 Expect filed altitude 10 minutes after departure.

HAWES TRANSITION (LURIC6.HAWES)

ORRTH TRANSITION (LURIC6.ORRTH)



NOTE: Chart not to scale.

SC-5, 03 JAN 2019 to 31 JAN 2019

SC-5, 03 JAN 2019 to 31 JAN 2019