

(ROCKY1.ROCKY) 18032
ROCKY ONE DEPARTURE

AL-5438 (FAA)

INDIANAPOLIS EXECUTIVE (TYQ)
 INDIANAPOLIS, INDIANA

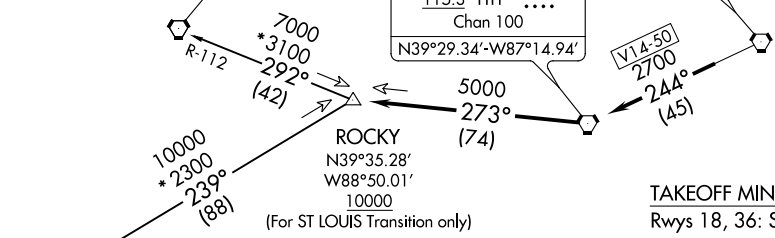
AWOS-3PT
 120.725
 INDIANAPOLIS DEP CON
 124.65 127.15 317.8

**TOP ALTITUDE:
 ASSIGNED BY ATC**

SPINNER
 112.7 SPI $\vdots\vdots\vdots$
 Chan 74
 N39°50.38'-W89°40.66'
 L-27, H-5

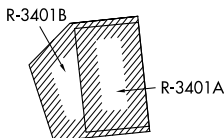
TERRE HAUTE
 115.3 TTH $\vdots\vdots\vdots$
 Chan 100
 N39°29.34'-W87°14.94'

BRICKYARD
 116.3 VHP $\vdots\vdots\vdots$
 Chan 110



TAKEOFF MINIMUMS
 Rwy 18, 36: Standard.

ST LOUIS
 117.4 STL $\vdots\vdots\vdots$
 Chan 121
 N38°51.64'-W90°28.94'
 L-27, H-5



- NOTE: RADAR required.
- NOTE: Select appropriate localizer/DME frequency/channel prior to departure.
- NOTE: Turbojets accelerate to 250K until reaching 10000, if unable advise ATC.
- NOTE: Assigned to aircraft with a requested altitude of 11000 or above.

NOTE: Chart not to scale.

DEPARTURE ROUTE DESCRIPTION

DEPARTING ALL OTHER AUTHORIZED RUNWAYS: Climb on assigned heading to assigned altitude. Thence

. . . . expect RADAR vectors to join VHP R-244 to TTH VORTAC, then via TTH R-273 to ROCKY INT then via transition or assigned route. Expect clearance to requested altitude ten minutes after departure.

SPINNER TRANSITION (ROCKY1.SPI): From over ROCKY INT on SPI R-112 to SPI VORTAC.
ST LOUIS TRANSITION (ROCKY1.STL): From over ROCKY INT on STL R-059 to STL VORTAC.

ROCKY ONE DEPARTURE
(ROCKY1.ROCKY) 01FEB18

INDIANAPOLIS, INDIANA
 INDIANAPOLIS EXECUTIVE (TYQ)

EC-2, 03 JAN 2019 to 31 JAN 2019

EC-2, 03 JAN 2019 to 31 JAN 2019