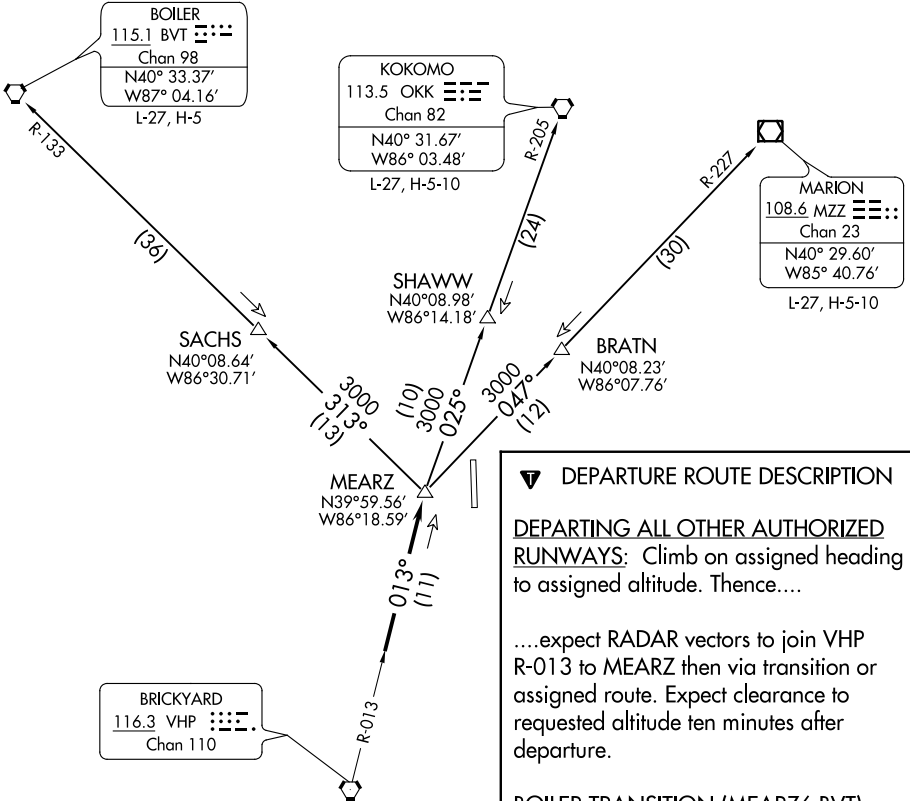


**TOP ALTITUDE:  
 ASSIGNED BY ATC**

AWOS-3PT  
 120.725  
 INDIANAPOLIS DEP CON  
 124.65 127.15 317.8



**▼ DEPARTURE ROUTE DESCRIPTION**

**DEPARTING ALL OTHER AUTHORIZED RUNWAYS:** Climb on assigned heading to assigned altitude. Thence....

....expect RADAR vectors to join VHP R-013 to MEARZ then via transition or assigned route. Expect clearance to requested altitude ten minutes after departure.

**BOILER TRANSITION (MEARZ6.BVT):**  
 From over MEARZ via BVT R-133 to BVT VORTAC.

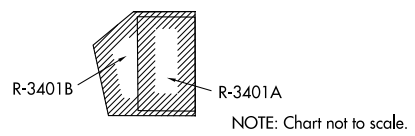
**KOKOMO TRANSITION (MEARZ6.OKK):**  
 From over MEARZ via OKK R-205 to OKK VORTAC.

**MARION TRANSITION (MEARZ6.MZZ):**  
 From over MEARZ via MZZ R-227 to MZZ VOR/DME.

**TAKEOFF MINIMUMS**

Rwys 18, 36: Standard.

- NOTE: RADAR required.
- NOTE: Select appropriate localizer/DME frequency/channel prior to departure.
- NOTE: Turbojets accelerate to 250K until reaching 10000, if unable advise ATC.
- NOTE: Assigned to aircraft with a requested altitude of 11000 or above.



EC-2, 03 JAN 2019 to 31 JAN 2019

EC-2, 03 JAN 2019 to 31 JAN 2019