

(DAWNN1.DAWNN) 17341  
**DAWNN ONE DEPARTURE**

AL-5438 (FAA)

INDIANAPOLIS EXECUTIVE (TYQ)  
 INDIANAPOLIS, INDIANA

**TOP ALTITUDE:  
 ASSIGNED BY ATC**

AWOS-3PT  
 120.725  
 INDIANAPOLIS DEP CON  
 124.65 127.15 317.8

BRICKYARD  
 116.3 VHP  
 Chan 110

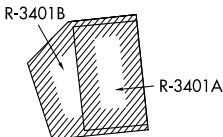
TAKEOFF MINIMUMS:  
 Rwy 18, 36: Standard.

R-098  
 TERRE HAUTE  
 115.3 TTH  
 Chan 100

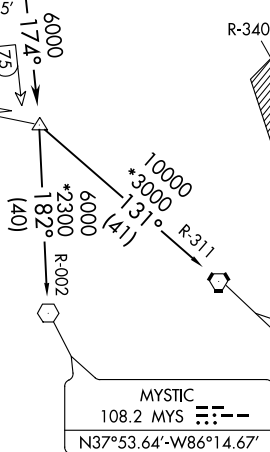
R-174  
 SNEVA  
 RADAR  
 N39°21.43'  
 W86°18.96'

R-113  
 HOOSIER  
 110.2 OOM  
 Chan 39

R-174  
 FOYTT  
 RADAR  
 N39°02.50'  
 W86°16.85'



6000  
 174°  
 DAWNN  
 N38°34.10'  
 W86°13.72'  
 10000  
 (For LOUISVILLE Transition)



R-311  
 LOUISVILLE  
 114.8 IU  
 Chan 95  
 N38°06.21'-W85°34.65'  
 L-26-27, H-5-10

R-002  
 MYSTIC  
 108.2 MYS  
 N37°53.64'-W86°14.67'  
 L-16, H-5-10

EC-2, 03 JAN 2019 to 31 JAN 2019

EC-2, 03 JAN 2019 to 31 JAN 2019

- NOTE: RADAR required.
- NOTE: Select appropriate localizer/DME frequency/channel prior to departure.
- NOTE: Turbojets accelerate to 250K until reaching 10000, if unable advise ATC.
- NOTE: Assigned to aircraft with a requested altitude of 11000 or above.

(NARRATIVE ON FOLLOWING PAGE)

NOTE: Chart not to scale.

**DAWNN ONE DEPARTURE**  
 (DAWNN1.DAWNN) 07DEC17

INDIANAPOLIS, INDIANA  
 INDIANAPOLIS EXECUTIVE (TYQ)