

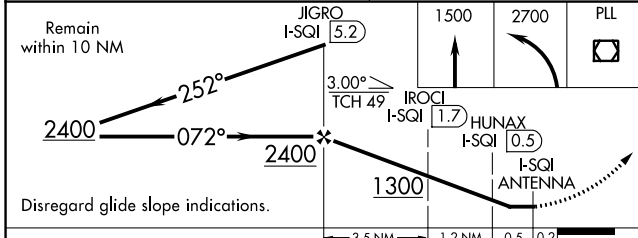
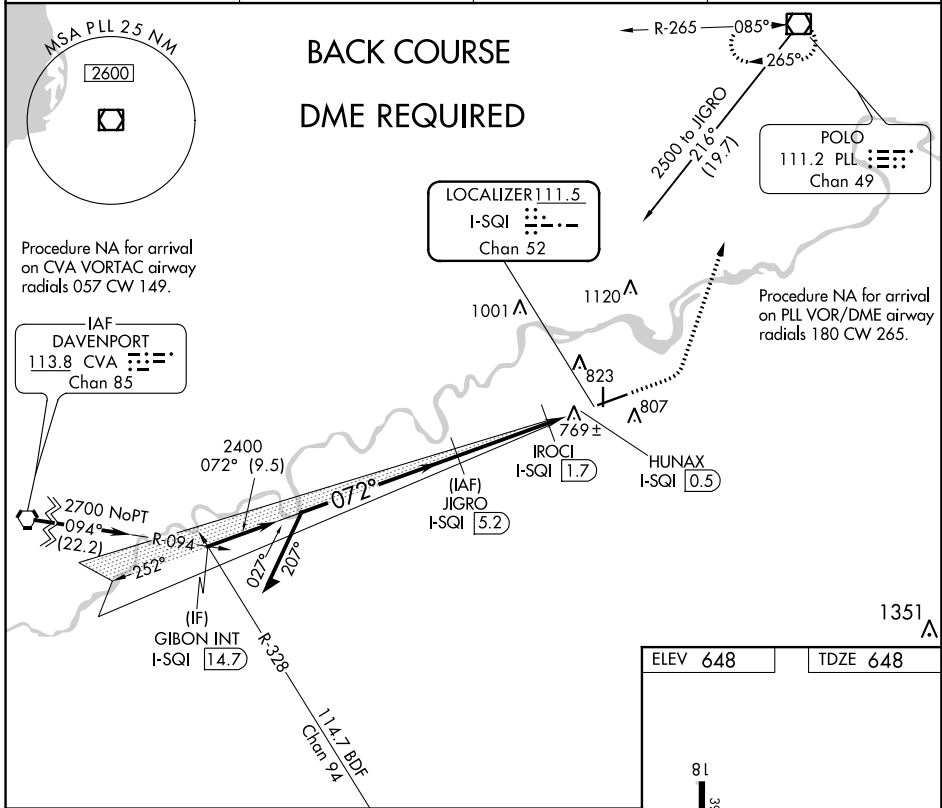
LOC/DME I-SQI 111.5 Chan 52	APP CRS 072°	Rwy ldg 6499 TDZE 648 Apt Elev 648
--	------------------------	---

WHITESIDE COUNTY AIRPORT-
JOSEPH H. BITTORF FIELD (SQI) **LOC BC RWY 7**

NA Circling Rwy 36 NA at night.
Rwy 7 helicopter visibility reduction below 3/4 SM NA.
DME required.

MISSED APPROACH: Climb to 1500 then climbing left turn to 2700 direct PLL VOR/DME and hold.

AWOS-3PT 119.175	ROCKFORD APP CON 126.0 327.0	CLNC DEL 128.0	UNICOM 123.0 (CTAF)
----------------------------	--	--------------------------	-------------------------------



CATEGORY	A	B	C	D
S-LOC 7	1020-1 372 (400-1)			
CIRCLING	1140-1 492 (500-1)	1160-1 512 (600-1 1/2)		1480-2 832 (900-2 3/4)

MIRL Rwy 18-36	
HIRL Rwy 7-25	
REIL Rwys 7, 18 and 36	
FAF to MAP 5.4 NM	
Knots	60 90 120 150 180
Min:Sec	5:24 3:36 2:42 2:10 1:48

EC-3, 03 JAN 2019 to 31 JAN 2019

EC-3, 03 JAN 2019 to 31 JAN 2019