


|  |                        |                             |   |
|--|------------------------|-----------------------------|---|
| WAAS<br>CH <b>86420</b><br><b>W09A</b> | APP CRS<br><b>092°</b> | Rwy Idg<br>TDZE<br>Apt Elev | <b>5004</b><br><b>905</b><br><b>905</b> |
|--|------------------------|-----------------------------|---|

# RNAV (GPS) RWY 9R

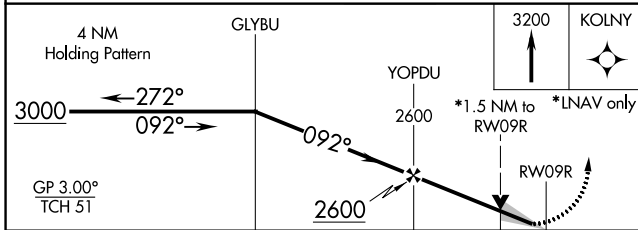
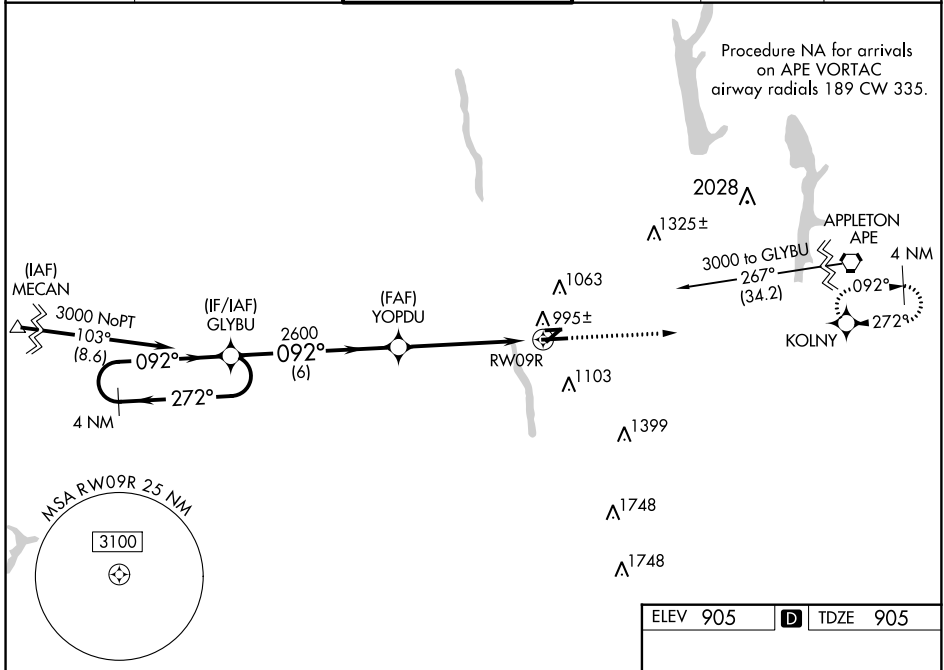
OHIO STATE UNIVERSITY (OSU)

**⚠** Baro-VNAV NA when using Port Columbus altimeter setting. For uncompensated Baro-VNAV systems, LNAV/VNAV NA below -16°C (4°F) or above 38°C (100°F). DME/DME RNP-0.3 NA. VDP NA with Port Columbus altimeter setting. When local altimeter setting not received, use Port Columbus altimeter setting and increase all DA 35 feet and all MDA 40 feet. Increase LNAV Cat C/D visibility ½ mile.

**MALSR** 

**MISSED APPROACH:** Climb to 3200 direct KOLNY and hold.

|                       |   |  |                         |                          |                         |
|-----------------------|---|--|-------------------------|--------------------------|-------------------------|
| ATIS<br><b>121.35</b> | COLUMBUS APP CON<br><b>125.95 317.775</b> | STATE TOWER *<br><b>118.8 (CTAF) 0 254.325</b> | GND CON<br><b>121.7</b> | CLNC DEL<br><b>121.7</b> | UNICOM<br><b>122.95</b> |
|-----------------------|---|--|-------------------------|--------------------------|-------------------------|



| CATEGORY     | A      | B           | C             | D           |
|--------------|--------|-------------|---------------|-------------|
| LPV DA       |        | 1105-½      | 200 (200-½)   |             |
| LNAV/VNAV DA |        | 1168-½      | 263 (300-½)   |             |
| LNAV MDA     | 1420-½ | 515 (600-½) | 1420-1        | 515 (600-1) |
| CIRCLING     | 1420-1 | 515 (600-1) | 1420-1 ½      | 1460-2      |
|              |        |             | 515 (600-1 ½) | 555 (600-2) |

ELEV 905 **D** TDZE 905

Obstructions: 980, 978, 1043, 2994 X #100, 2537 X 100, 5004 X 100, 980, 978, 1043.

Angles: 092° to RW09R, 272°.

REIL Rwy 27L  
HIRL Rwy 9R-27L  
MIRL Rwys 9L-27R and 5-23

EC-2, 03 JAN 2019 to 31 JAN 2019

EC-2, 03 JAN 2019 to 31 JAN 2019