


LOC I-OSU 108.5	APP CRS 092°	Rwy Idg TDZE Apt Elev	5004 905 905
---------------------------	------------------------	-----------------------------	---

ILS or LOC RWY 9R

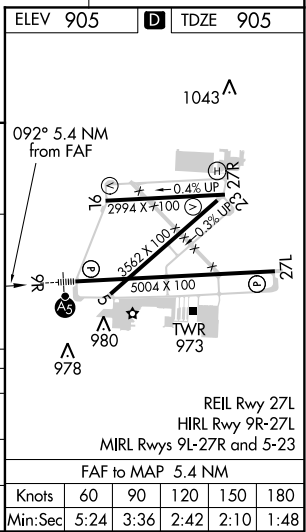
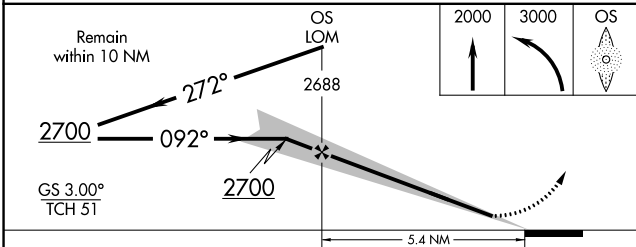
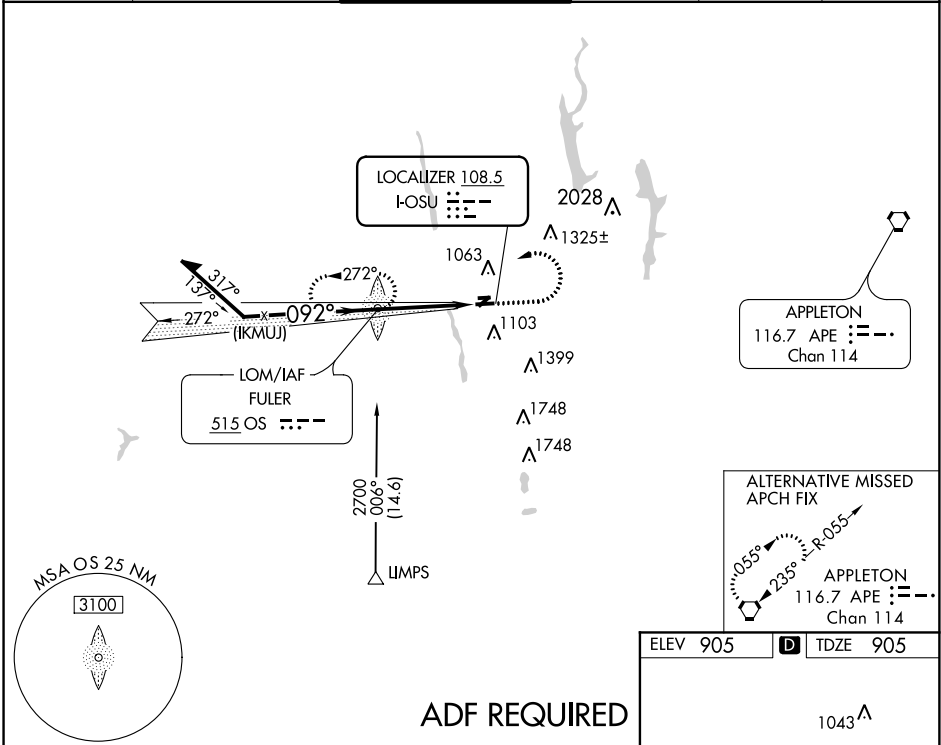
OHIO STATE UNIVERSITY (OSU)

ADF REQUIRED. When local altimeter setting not received, use Port Columbus altimeter setting and increase all DA 35 feet and all MDA 40 feet. Increase S-LOC 9R Cat C/D and Circling Cat C visibility 1/8 mile.

MALSR 

MISSED APPROACH: Climb to 2000 then climbing left turn to 3000 direct FULER LOM and hold.

ATIS 121.35	COLUMBUS APP CON 125.95 317.775	STATE TOWER ★ 118.8 (CTAF) 254.325	GND CON 121.7	CLNC DEL 121.7	UNICOM 122.95
-----------------------	---	--	-------------------------	--------------------------	-------------------------



CATEGORY	A	B	C	D
S-ILS 9R	1105-1/2		200 (200-1/2)	
S-LOC 9R	1420-1/2	515 (600-1/2)	1420-1	515 (600-1)
CIRCLING	1420-1	515 (600-1)	1420-1 1/2	1460-2
			515 (600-1 1/2)	555 (600-2)

EC-2, 03 JAN 2019 to 31 JAN 2019

EC-2, 03 JAN 2019 to 31 JAN 2019