

WAAS CH 97719 W09A	APP CRS 092°	Rwy Idg TDZE Apt Elev	5100 845 850
--	------------------------	-----------------------------	---

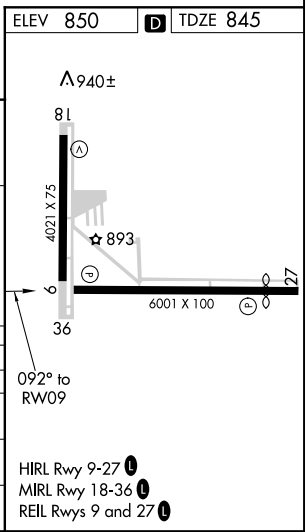
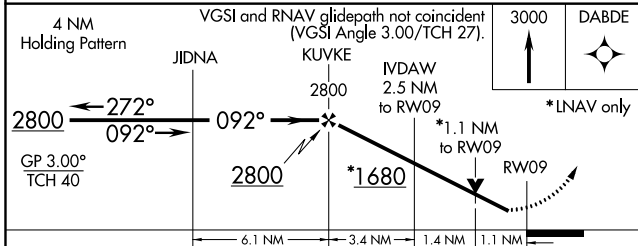
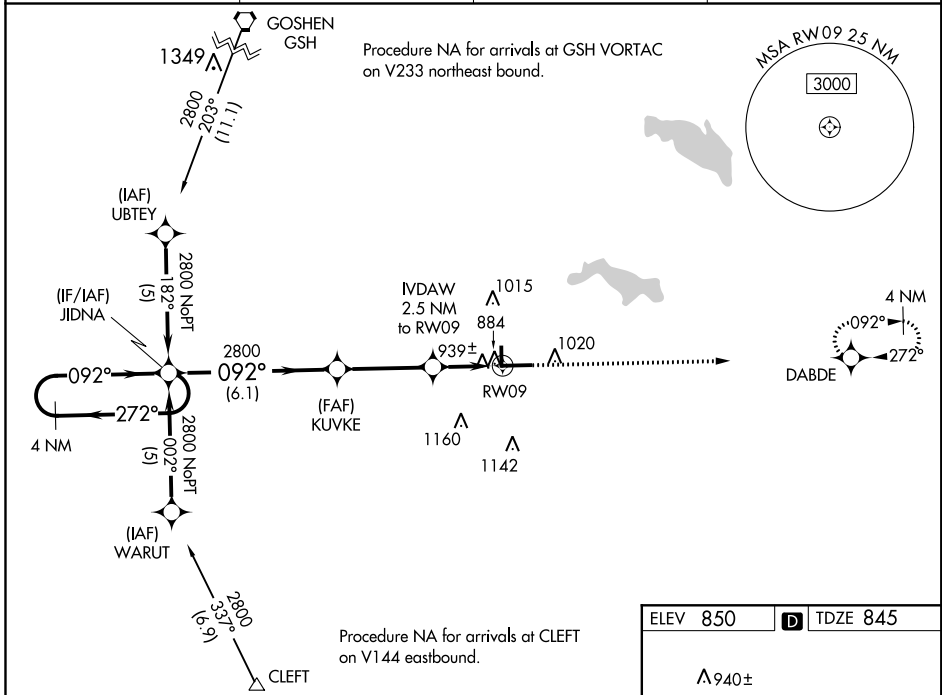
RNAV (GPS) RWY 9

WARSAW MUNI (ASW)

⚠ DME/DME RNP-0.3 NA. Visibility reduction by helicopters NA. For uncompensated Baro-VNAV systems, LNAV/VNAV NA below -16°C (4°F) or above 47°C (116°F).
⚠ Circling to Rwy 36 NA at night. Baro-VNAV and VDP NA when using Goshen altimeter setting. When local altimeter setting not received, use Goshen altimeter setting and increase all DA/MDA 40 feet. When VGSI inoperative, Circling Rwy 18 NA at night.

MISSED APPROACH: Climb to 3000 direct DABDE and hold.

AWOS-3 121.125	FORT WAYNE APP CON 127.2 284.6	CLNC DEL 134.05	UNICOM 122.7 (CTAF) 0
--------------------------	--	---------------------------	---------------------------------



CATEGORY	A	B	C	D
LPV DA	1095-1 250 (300-1)			
LNAV/VNAV DA	1237-1½ 392 (400-1½)			
LNAV MDA	1200-1 355 (400-1)		1200-1¼ 355 (400-1¼)	
CIRCLING	1320-1 470 (500-1)		1320-1½ 470 (500-1½)	
			1400-2 550 (600-2)	

EC-2, 03 JAN 2019 to 31 JAN 2019

EC-2, 03 JAN 2019 to 31 JAN 2019