

WAAS CH 53519 W27A	APP CRS 272°	Rwy Idg TDZE Apt Elev	5100 847 850
--	------------------------	-----------------------------	---

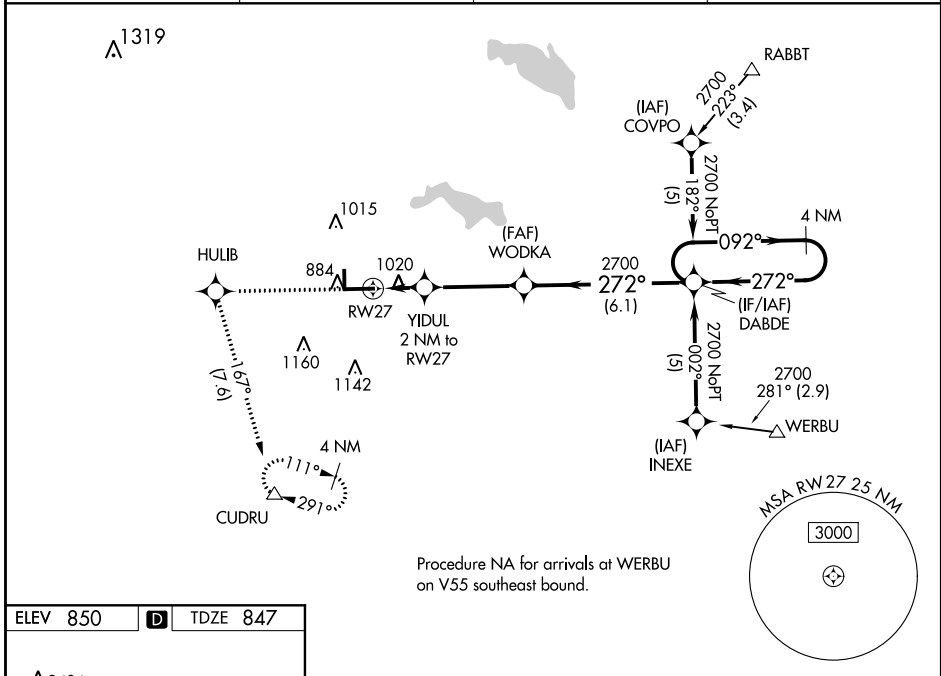
RNAV (GPS) RWY 27

WARSAW MUNI (ASW)

▼ For uncompensated Baro-VNAV systems, LNAV/VNAV NA below -16°C (4°F) or above 47°C (116°F). DME/DME RNP-0.3 NA. When local altimeter setting not received, use Goshen altimeter setting and increase all DA/MDA 40 feet. Circling to Rwy 36 NA at night. When VGS1 inoperative, Circling Rwy 18 NA at night. Baro-VNAV and VDP NA when using Goshen altimeter setting.

▲ MISSED APPROACH: Climb to 3000 direct HULIB and left turn on track 167° to CUDRU and hold.

AWOS-3 121.125	FORT WAYNE APP CON 127.2 284.6	CLNC DEL 134.05	UNICOM 122.7 (CTAF) 0
--------------------------	--	---------------------------	---------------------------------



EC-2, 03 JAN 2019 to 31 JAN 2019

EC-2, 03 JAN 2019 to 31 JAN 2019

ELEV 850	D	TDZE 847
----------	----------	----------

HIRL Rwy 9-27
MIRL Rwy 18-36
REIL Rws 9 and 27

3000	HULIB	CUDRU	WODKA	DABDE	4 NM Holding Pattern
*LNAV only		YIDUL 2 NM to RW27	2700	2700	2700
*1.2 NM to RW27		*1.540	2700	2700	GP 3.00° TCH 53
1.2 NM		0.8 NM	3.6 NM	6.1 NM	
CATEGORY	A	B	C	D	
LPV DA	1122-1		275 (300-1)		
LNAV/VNAV DA	1334-1 ³ / ₄		487 (500-1 ³ / ₄)		
LNAV MDA	1280-1	433 (500-1)	1280-1 ¹ / ₄ 433 (500-1 ¹ / ₄)	1280-1 ¹ / ₂ 433 (500-1 ¹ / ₂)	
CIRCLING	1320-1	470 (500-1)	1320-1 ¹ / ₂ 470 (500-1 ¹ / ₂)	1400-2 550 (600-2)	