

LOC I-DRT 111.9 Chan 56	APP CRS 132°	Rwy Idg TDZE Apt Elev	6000 1002 1002
---	------------------------	-----------------------------	---

ILS or LOC RWY 13

DEL RIO INTL (DRT)

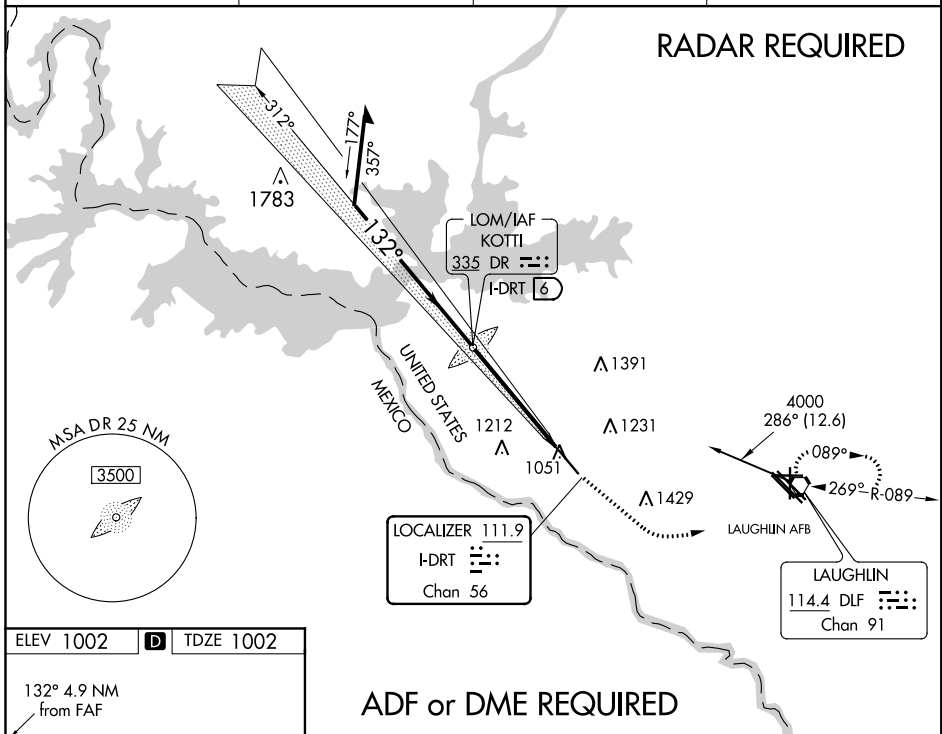
NA Circling NA for Cat D SW of Rwy 13-31. When local altimeter setting not received, use Laughlin AFB altimeter setting and increase all DAs 30 feet, all MDAs 40 feet, increase S-LOC 13 Cat D and Circling Cat D visibility 1/4 mile. VDP NA when using Laughlin AFB altimeter setting.

MALS

MISSED APPROACH: Climb to 2000 via heading 122° then climbing left turn to 4000 direct DLF VORTAC and hold. Continue climb-in-hold to 4000.

ASOS 118.525	DEL RIO APP CON ★ 119.6 259.1	CLNC DEL 120.5	UNICOM 122.8 (CTAF) 0
------------------------	---	--------------------------	--

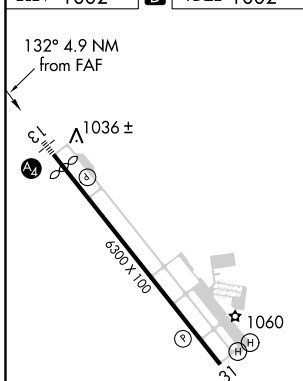
RADAR REQUIRED



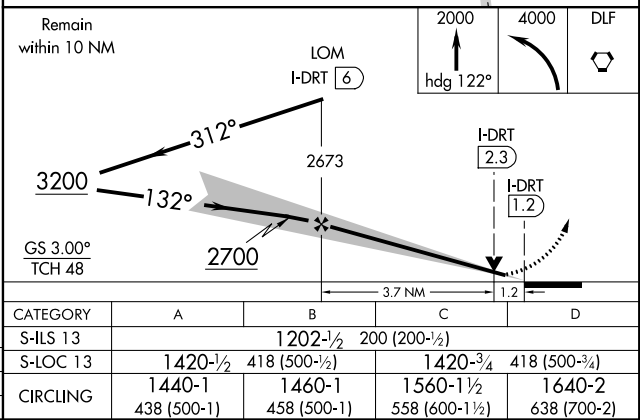
SC-3, 03 JAN 2019 to 31 JAN 2019

SC-3, 03 JAN 2019 to 31 JAN 2019

ELEV 1002	D	TDZE 1002
-----------	----------	-----------



ADF or DME REQUIRED



FAF to MAP 4.9 NM					
Knots	60	90	120	150	180
Min:Sec	4:54	3:16	2:27	1:58	1:38

DEL RIO, TEXAS
Orig 08APR10

29°22'N-100°56'W

DEL RIO INTL (DRT)

ILS or LOC RWY 13