

APP CRS <b>284°</b>	Rwy Idg TDZE Apt Elev	<b>3000</b> <b>150</b> <b>150</b>
------------------------	-----------------------------	---

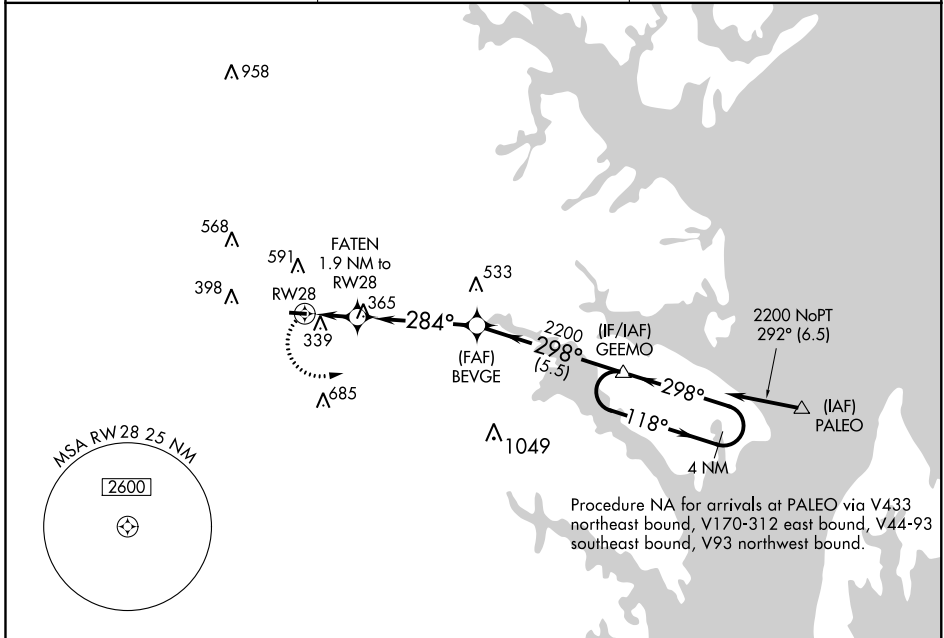
# RNAV (GPS) RWY 28

TIPTON (FME)

**⚠** DME/DME RNP-0.3 NA. Night landing: Rwy 10 NA. Helicopter visibility reduction below ¼ SM NA. When local altimeter setting not received, use Baltimore-Washington Intl Thurgood Marshall altimeter setting and increase all MDA 20 feet.

**⚠** MISSED APPROACH: Climbing left turn to 2200 direct GEEMO and hold.

AWOS-3 <b>123.925</b>	POTOMAC APP CON <b>119.7 290.475</b>	UNICOM <b>123.05 (CTAF) 0</b>
--------------------------	---	----------------------------------



NE-3, 03 JAN 2019 to 31 JAN 2019

NE-3, 03 JAN 2019 to 31 JAN 2019

ELEV 150	TDZE 150
----------	----------

REIL Rws 10 and 28 **0**  
MIRL Rwy 10-28 **0**

2200	GEEMO	VGSI and descent angles not coincident (VGSI Angle 4.00/TCH 57).		
<p>4 NM Holding Pattern</p>				
CATEGORY	A	B	C	D
LNAV MDA	600-1	450 (500-1)		NA
CIRCLING	820-1	670 (700-1)		NA