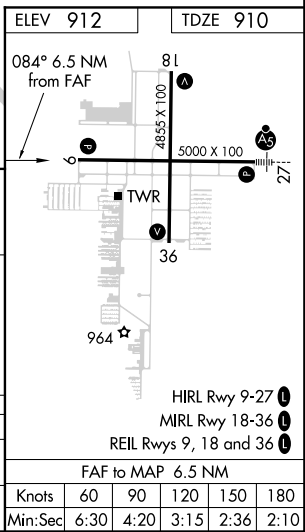
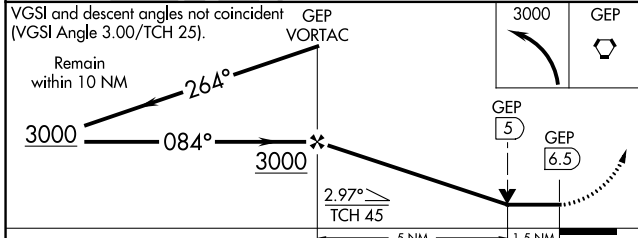
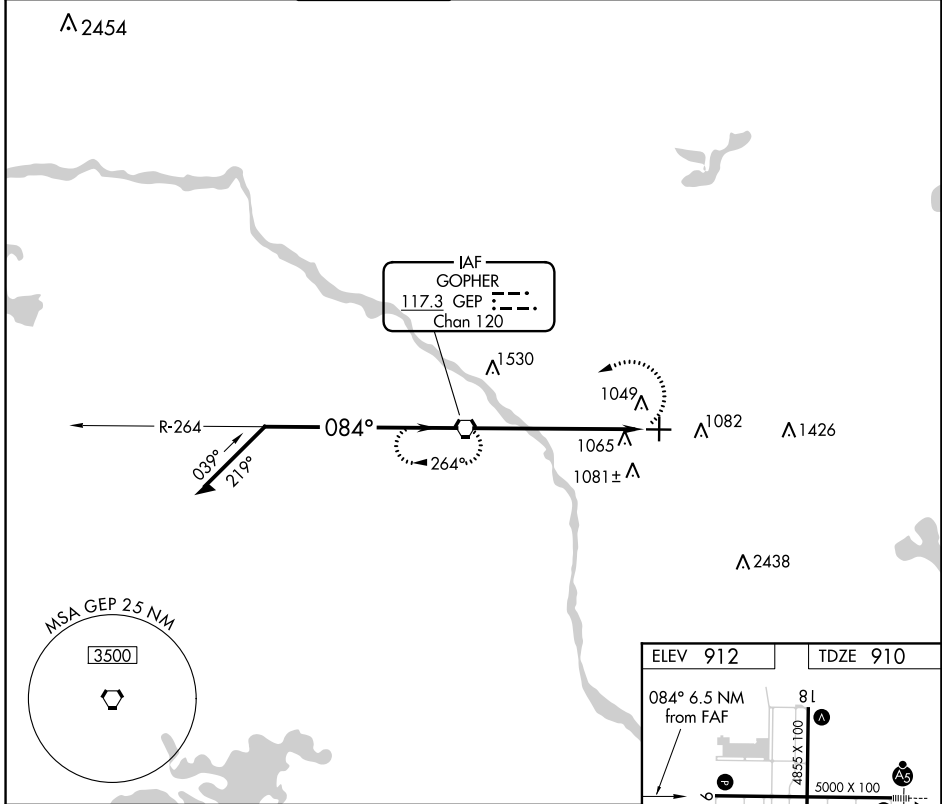


VORTAC GEP 117.3 Chan 120	APP CRS 084°	Rwy Idg TDZE Apt Elev	5000 910 912
--	------------------------	-----------------------------	---

VOR RWY 9
ANOKA COUNTY-BLAINE (JANES FIELD) (A.N.E.)

MISSED APPROACH: Climbing left turn to 3000 direct GEP VORTAC and hold.

ATIS 120.625	MINNEAPOLIS APP CON 126.5 335.65	ANOKA TOWER* 132.4 (CTAF) 0	GND CON 121.85	CLNC DEL 121.3	MINNEAPOLIS CLNC DEL 121.85 (When tower closed)	UNICOM 122.95
------------------------	--	---	--------------------------	--------------------------	--	-------------------------



CATEGORY	A	B	C	D
S-9	1400-1 490 (500-1)		1400-1 ³ / ₈ 490 (500-1 ³ / ₈)	1400-1 ¹ / ₂ 490 (500-1 ¹ / ₂)
C CIRCLING	1400-1 488 (500-1)		1460-1 ¹ / ₂ 548 (600-1 ¹ / ₂)	1580-2 668 (700-2)

NC-1, 03 JAN 2019 to 31 JAN 2019

NC-1, 03 JAN 2019 to 31 JAN 2019