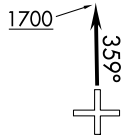


(ORSKY1.ORSKY) 17229
ORSKY ONE DEPARTURE

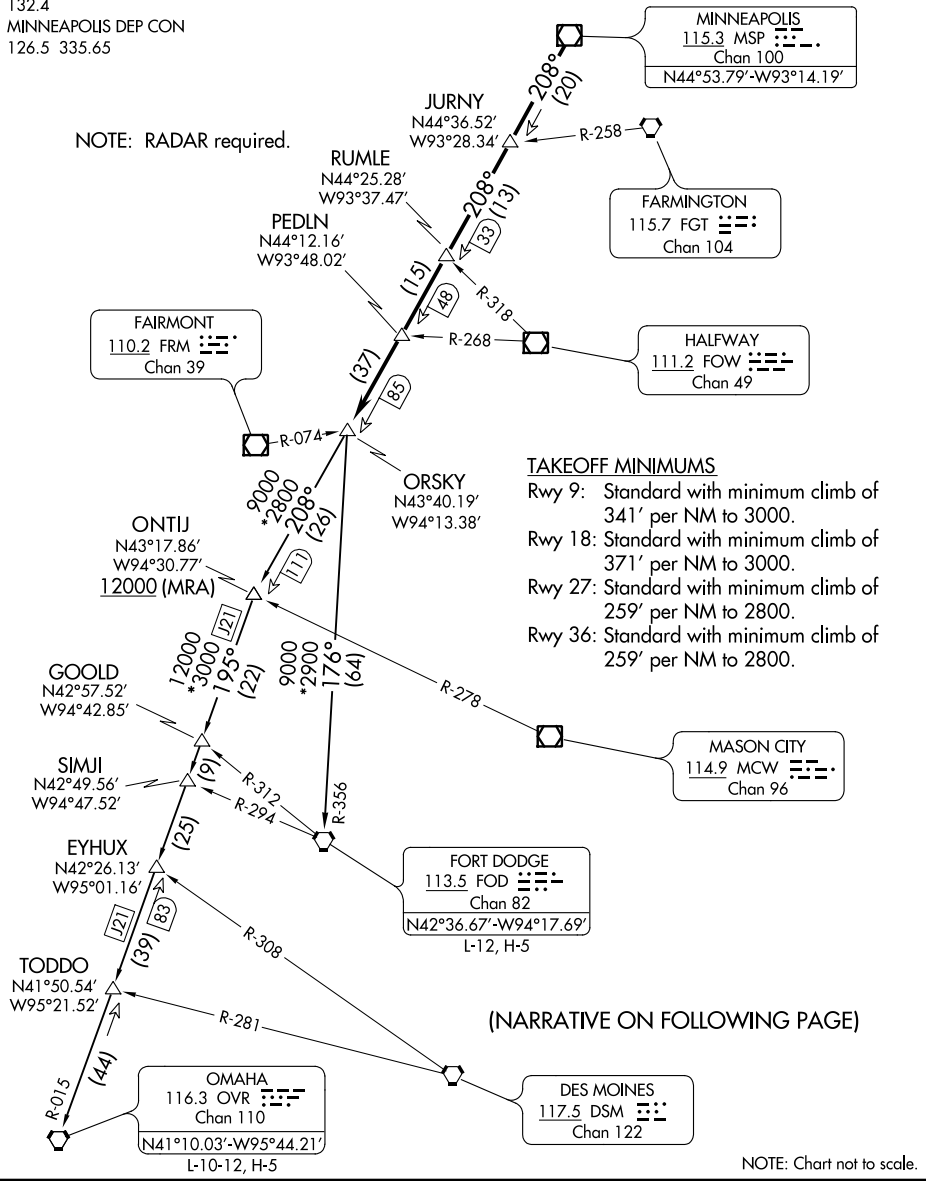
ANOKA COUNTY-BLAINE (JANES FIELD) (ANE)
 AL-5202 (FAA) MINNEAPOLIS, MINNESOTA

ATIS
 120.625
 CLNC DEL
 121.3
 MINNEAPOLIS CLNC DEL
 121.85 (when tower closed)
 ANOKA TOWER ★
 132.4
 MINNEAPOLIS DEP CON
 126.5 335.65



**TOP ALTITUDE:
 ASSIGNED BY ATC**

NOTE: RADAR required.



- TAKEOFF MINIMUMS**
- Rwy 9: Standard with minimum climb of 341' per NM to 3000.
 - Rwy 18: Standard with minimum climb of 371' per NM to 3000.
 - Rwy 27: Standard with minimum climb of 259' per NM to 2800.
 - Rwy 36: Standard with minimum climb of 259' per NM to 2800.

(NARRATIVE ON FOLLOWING PAGE)

NOTE: Chart not to scale.

NC-1, 03 JAN 2019 to 31 JAN 2019

NC-1, 03 JAN 2019 to 31 JAN 2019

(ORSKY1.ORSKY) 17AUG17
ORSKY ONE DEPARTURE

MINNEAPOLIS, MINNESOTA
 ANOKA COUNTY-BLAINE (JANES FIELD) (ANE)