

VORTAC IRQ 113.9 Chan 86	APP CRS 102°	Rwy Idg TDZE Apt Elev	N/A N/A 528
--	------------------------	-----------------------------	--

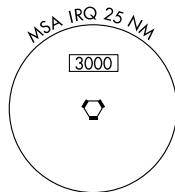
VOR/DME-A
AIKEN RGNL (AIK)

NA When local altimeter setting not received, use Augusta Rgnl at Bush Field altimeter setting and increase all MDA 120 feet and increase Cat D visibility 1/4 mile.

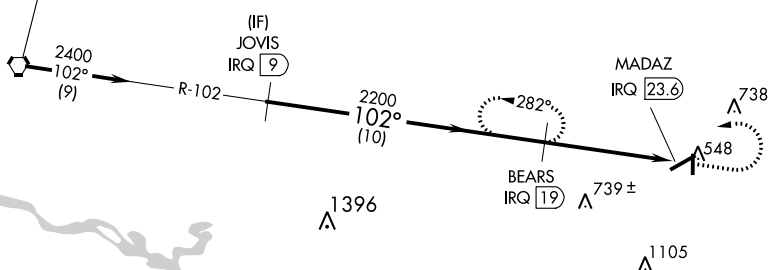
MISSED APPROACH: Climb to 1600 then climbing left turn to 2400 on IRQ VORTAC R-102 to BEARS/IRQ 19 DME and hold.

AWOS-3 118.025	AUGUSTA APP CON* 119.15 284.625	CLNC DEL 126.075	UNICOM 122.8 (CTAF)
--------------------------	---	----------------------------	-------------------------------

Procedure NA for arrivals at IRQ VORTAC on airway radials 062 CW 154.

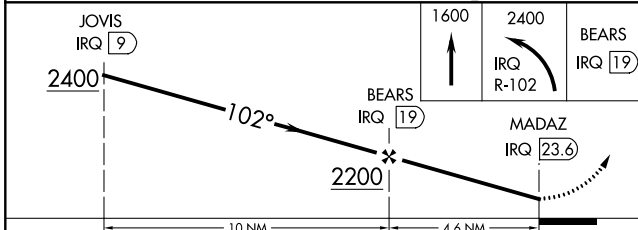
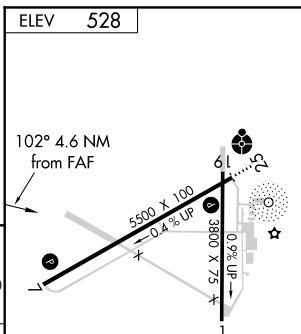


IAF
COLLIERS
113.9 IRQ
Chan 86



SE-2, 03 JAN 2019 to 31 JAN 2019

SE-2, 03 JAN 2019 to 31 JAN 2019



CATEGORY	A	B	C	D
CIRCLING	980-1 452 (500-1)	1000-1¼ 472 (500-1¼)	1000-1½ 472 (500-1½)	1080-2 552 (600-2)

REIL Rwy 25
MIRL Rwy 7-25